

ABEBA®

# SAFETY SHOES

WORKERS ONLY



[www.abeba.com](http://www.abeba.com)



---

# Dear business partner, dear customer,

---



the basis of a high quality shoe is besides the technical expertise and know-how the passion for shoes. Understanding and respect for the person and his needs in everyday worklife are ABEBBA's major motivation for the development of safety and occupational shoes. By living this philosophy we create the difference: Perfect protection, a healthy foot climate and best wearing comfort for an every day use.

Our main focus is to offer the best quality products therefore we make the highest demands on the materials used and the most accurate way of manufacturing.

Our demand is to exceed your demands!

ABEBBA is one of the largest and most modern shoe manufacturers in Europe with customers in more than 30 countries worldwide. With our German warehouse, our French subsidiary and our production facilities in several European countries we are always ready to meet your demands.

Since 1st of June 2007 ABEBBA is part of the traditional Polish shoe manufacturer Protektor. The Protektor S.A. is listed at the Warsaw stock exchange.

ABEBBA safety and occupational shoes are exclusively available at specialized dealers and distributors in worldwide more than 2,000 outlets with specially trained personnel.

Together with our European sales team we are happy to answer your questions about ABEBBA and our products. We can assure you that we will find the best solution customized to your particular needs.

Thank you for the trust in our company!

Your  team

# CONTENT

## SAFETY SHOES

### Imprint

Editor:  
ABEBA Spezialschuh-Ausstatter GmbH  
Schlackenbergstrasse 5  
D-66386 St. Ingbert  
Tel: +49 6894 3103-100  
Fax: +49 6894 3074  
E-Mail: abeba@abeba.de  
www.abeba.com

Editorial Team:  
ABEBA Marketing and Sales

Layout:  
blickfang marken- und designagentur GmbH

Our sales documents are also available in German and French.

We reserve the right to modify models, colours and technical details as well as the right to make a compensation or subsequent delivery. Printed on environmentally friendly paper.



---

## 16 CLASSIC

---

## 18 LIGHT

The right choice



---

## 28 UNI6

Experience the future



---

## 40 ANATOM

Safety with best wearing comfort



---

## 54 **CRAWLER**

Visions become reality. 3 caps, 1 sole

---

## 56 **CRAWLER - ALUMINIUM**



---

## 66 **CRAWLER - STEEL**



---

## 68 **CRAWLER - COMPOSITE**



---

## 70 **STATIC CONTROL**

High-tech footwear



---

## 76 **BUSINESS MEN**

---

## 78 **PROTEKTOR LINE**

---

---

## **TECHNICAL INFORMATION**

07	HACCP / BGR 111
08 - 11	ESD / ATEX
12 - 15	ORTHOSTAT / SENSOSTAT
84 - 87	Standards / Technology

---

## **# ACCESSORIES**

---

## 82 **INSOLES**

---

## 88 **INDEX**

---



---

# KITCHENS AND FOOD INDUSTRY

## HACCP

HACCP – Hazard Analysis Critical Control Points – is a monitoring system using risk analysis. This serves to identify, assess and combat major health risks caused by foodstuffs. In the production, treatment and processing of foodstuffs, all possible effects which might cause health problems by eating such food must be eliminated from the very beginning.

More information is available on your local HACCP website. ABEBA Shoes are manufactured using only materials fully certified and approved by us. With this comprehensive quality assurance, we guarantee that no materials susceptible to bacterial infection are used.

Ask our trained personnel and specialist dealers for the correct footwear for your needs. Please ask us for any support.

We are prepared!

Numerous styles have already been microbiologically tested by the Test and Research Institute Pirmasens (PFI) and have been certified according to Baumgart (HACCP-compliant). Please refer to all shoes marked with the „A-micro“ and „HACCP-compliant“ icon.



### **HACCP - HAZARD ANALYSIS CRITICAL CONTROL POINTS**

1. Conduct a Hazard Analysis
2. Identify the Critical Control Points (CCPs)
3. Establish Critical Limits
4. Monitor CCPs
5. Establish Corrective Plan
6. Verification of the system
7. Record keeping

---

# ESD

# ELECTROSTATIC

# DISCHARGE

Electrostatic Discharge (ESD) means the compensation of big differences in potential that causes high voltage pulses. This voltage pulse can cause damages or even destroy electronic components.

Potential differences often result from friction or contact and separation of items. By this a human can be charged up to 30.000 Volts. The electrostatic discharge can only be felt by a person from 2.000 Volt on as a small electric shock. However electrostatic sensitive devices can be harmed by a blocking voltage of 5 – 30 V. Therefore while working with electrostatic sensitive devices actions have to be taken to reduce electrical charges reliable and prevent the occurrence of quick discharge.

Actions against static discharge are described in the EN 61340-5-1 standard. An effective grounding of persons by using ESD footwear serves to protect sensitive devices by frequently discharging the human body.



ESD shoes are made to discharge the electrostatic charge through the ground to the earth potential. The resistance of the system Person-Shoe-Ground shall be below 35 MOhm according to EN 61340-5-1 (verification). The qualification of the ESD footwear according to EN 61340-4-3 is measured in relation to the climate class 1 (12% RH), 2 (25% RH) and 3 (50% RH).

According to EN 61340-4-3 the shoe is preconditioned adequately and measured filled with a defined quantity of metal balls on a metal plate. Here the resistance shall be below 100 MOhm.

In practice the discharge capacity of ESD footwear is not only highly depending on the climatic environment (humidity and temperature) but also on factors like contamination and condition of the flooring as well as the electrical resistance of the person's body. ESD representatives of a company have to check frequently if the implemented ESD products still work in a proper way. Where ESD footwear is worn the resistance of the flooring should not influence the functionality of the ESD shoes. The implementation of "walking tests" helps to validate the functionality of the system Person-Shoe-Flooring.

**WARNING:** : ESD shoes are not suitable for electricians or while working on sources with any electric voltage.





## DEFINITION

### ESD - Electrostatic Discharge

Electrostatic discharge is caused by an imbalance of potential on charged objects or people by contact or close proximity.

### ESDS

Electrostatic Discharge Sensitive Device

### EPA

Electrostatic Protected Area

Area where sensitive devices can be handled directly with minimum risk of electrostatic damage.

### Electrostatic charge

Is produced by frictional contact and separation of two materials.

### Resistance to ground (R<sub>g</sub>) EN 61340

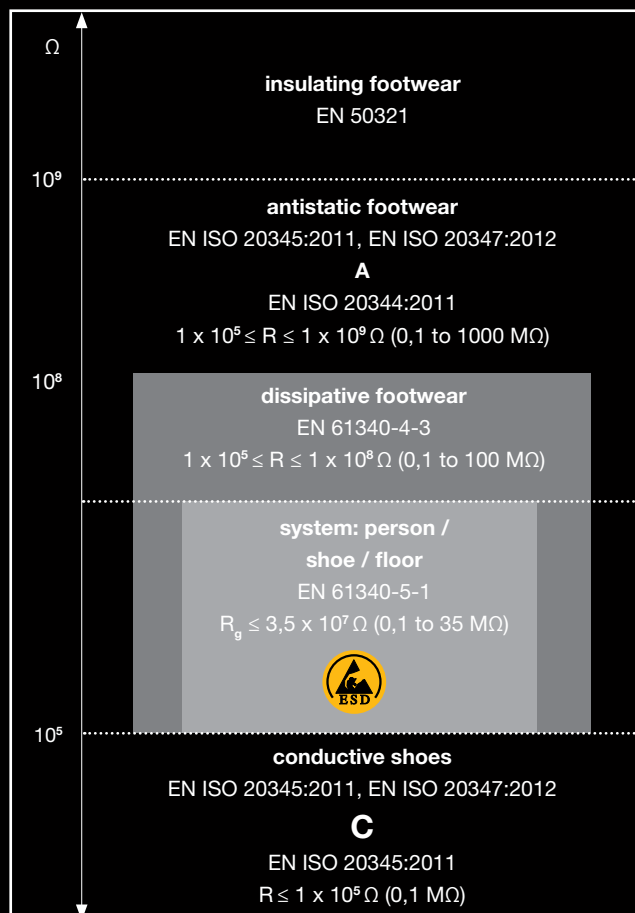
Is the resistance from a surface or an item within an EPA, measured with a suitable ohmmeter and test probe.

### Latent damage

Is the damage caused by ESD to sensitive devices, which has the effect of reducing components reliability without causing immediate failure.

## INFORMATION

Electrical resistance and protection against electrostatic phenomenons. ESD-footwear as primary grounding in the system of person/ shoe/ floor



A and C: additional requirements of occupational- and safety shoes regarding electric property. R: electrical resistance. R<sub>g</sub>: ground resistance.

For the daily function testing of the shoes the use of test stations has been established. There the resistance of person and shoe is measured. Attention should be paid to the separate measuring of the feet.

### Resistance Terminology

10 <sup>3</sup> Ohm =	0,001 MOhm =	1 kOhm
10 <sup>4</sup> Ohm =	0,01 MOhm =	10 kOhm
10 <sup>5</sup> Ohm =	0,1 MOhm =	100 kOhm
10 <sup>6</sup> Ohm =	1 MOhm =	1.000 kOhm
10 <sup>7</sup> Ohm =	10 MOhm	
10 <sup>8</sup> Ohm =	100 MOhm	
10 <sup>9</sup> Ohm =	1.000 MOhm =	1 GOhm
10 <sup>10</sup> Ohm =	10.000 MOhm =	10 GOhm
10 <sup>11</sup> Ohm =	100.000 MOhm =	100 GOhm
10 <sup>12</sup> Ohm =	1.000.000 MOhm =	1.000 GOhm



### ESD SUSCEPTIBLE

The symbol has been used since 1984 and denotes components and subassemblies that are ESD susceptible.



### ESD PROTECTIVE

The symbol was introduced in addition to symbol No. 1 in 1993 and denotes ESD protective products such as antistatic mats, trucks, clothing, protective covering, cartons, materials, etc.

---

# IGNITION SOURCE ELECTROSTATIC DISCHARGE



**ATEX**  
ATMOSPHERE **EXPLOSIBLE**  
EXPLOSIVE ATMOSPHERE

---

## IGNITION SOURCE ELECTROSTATIC DISCHARGE

Under certain conditions explosions may occur in technical plants which as a result can harm persons seriously. Due to this the necessity and meaning of explosion protection is getting more and more important. The basis of the explosion prevention is for example manifested in the ATEX directive of the European Union. ATEX comes from the French ATmosphère EXplosible. Areas subject to explosion hazards can be found in the chemical industry, while handling of inflammable liquids, gases, paints or coatings as well as in areas with intensive dust load like in printing houses, mills, grain silos or in the woodworking industry.

A major objective for the explosion protection is to avoid any ignition source. Besides obvious ignition sources like flames and sparks the electrostatic charge of persons and plant inventory should also be avoided as a person for example can be charged up to 30.000 Volt.

The minimum ignition energy (MIE) is an explosion prevention parameter for inflammable substances measured in millijoule (mJ). The MIE describes the ignition sensitivity due to static discharge of an explosive atmosphere. 2 to 3 kV is needed to cause a noticeable sensation to a person that reflects a MIE of approx. 0.7 mJ. Substances like Benzol already inflame at approx. 0.2 mJ. Besides gas-air mixtures dust-air mixtures also belong to explosive atmospheres.

An effective way of avoiding electrostatic discharge as an ignition source and to secure the workers is personnel grounding by using Abeba ESD shoes with ATEX marking. In combination with dissipative flooring Abeba ESD shoes avoid the built up of electric charge on the person's body and hereby the sudden discharge of the wearer. Europe-wide Abeba ATEX shoes are the first safety and occupational shoes to be certified for the use in explosive areas. The following standards and directives were considered:

Directive 1999/92/EG  
EN 61340-4-3 (climate class 1)  
CLC/TR 50404:2003



Shoes used in explosive areas zone 0, 1, 20 and 21 shall be dissipative with a resistance of less than 100 MOhm. Our shoes meet these requirements according to EN 61340-4-3 (metal balls in shoe on metal plate) and EN 61340-5-1 (person in shoe on metal plate). All Abeba ATEX shoes are certified according to EN 61340 with climate class 1.

In climate class 1 the shoe is preconditioned to 12% RH (relative humidity) and still needs to meet the requirement of a resistance less than 100 MOhm.

## WALKING TEST

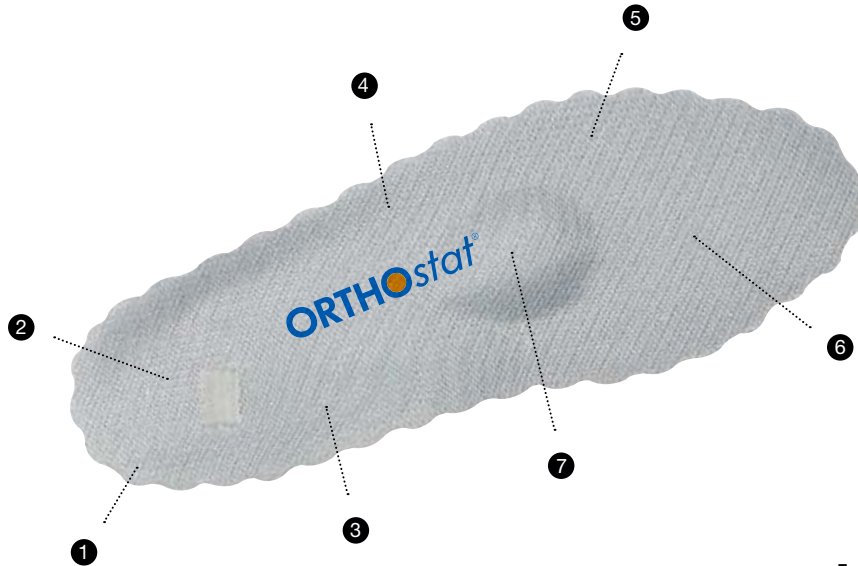
The experience shows that it is not enough just to control the resistance value of the ATEX/ ESD-shoes. To assure a sufficient protection against the static charge of employees, we recommend to add the walking test (according to EN 61340-4-5, charge must be below 100 V) to complete your security program for explosive areas.

If ATEX/ ESD-shoes are used the following facts should be considered:

- Effective ATEX/ ESD-protection is only assured by using ATEX/ ESD-shoes in combination with an ESD-floor
- Dirt or dust on the outsole may lead to an isolating layer
- Orthopaedic insoles and modifications must not affect the resistance of the shoe



# ORTHOPEDIC INSOLES



- 1 Light and stays in shape
- 2 Anatomically shaped heel area
- 3 Longitudinal and transversal arch support
- 4 ESD in combination with Abeba footwear
- 5 Skin-friendly
- 6 Bedding of the metatarsal head area
- 7 Anatomically shaped pad

## ORTHOSTAT

With all orthopedic adaptation it has to be tested if the safety or occupational shoe still meets the requirements of the EN ISO 20345 or EN ISO 20347 standards. Together with the orthopedic specialist Doppler ([www.doppler-online.com](http://www.doppler-online.com)) we have developed the individually adaptable orthopedic insole ORTHOstat. By using this insole your shoes will remain certified according to EN ISO standard.

## THE FOOT IS THE BASIS

Your customized orthopedic insoles ORTHOstat will have a direct impact on your foot and with this on your well-being.



There is a direct connection between the feet and various joints in our body which are frequently stressed by everyday use. Even small incorrect positions of the feet may have serious consequences for your knees, hips, back and with this on your complete well-being. The ORTHOstat insole relieves you from pain or even prevents its development.

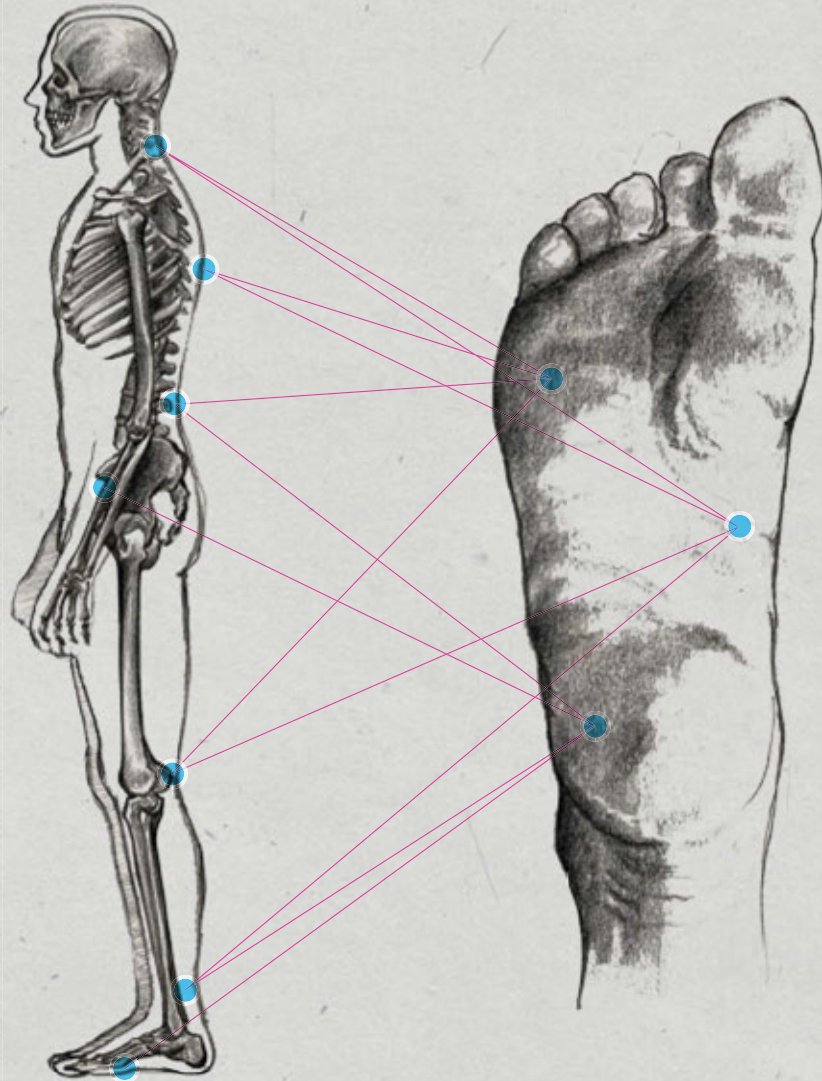
- ▶ Compensation of biomechanical stress
- ▶ Maintains your manpower
- ▶ Reduces downtime

# 26

---

bones, 60 muscles, 33 joints  
and 114 ligaments are forming one  
of the most complex structure  
of the human body,  
the foot.

---



# 2.500

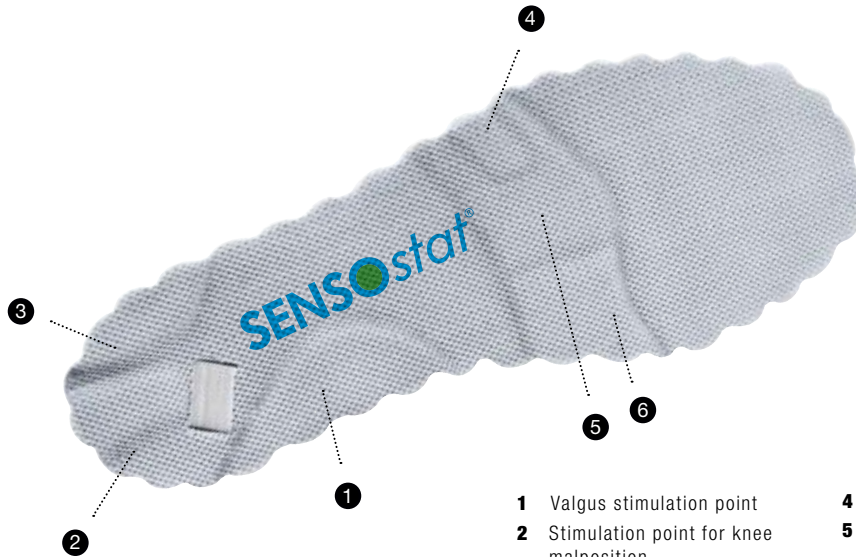
---

tons of weight are carried by the  
feet every day (person of 70 kilo).  
This corresponds to the weight  
of 5 passenger trains.

---



# SENSORIMOTOR INSOLES



- |                                          |                                                     |
|------------------------------------------|-----------------------------------------------------|
| 1 Valgus stimulation point               | 4 Spine                                             |
| 2 Stimulation point for knee malposition | 5 Stimulation point for repositioning of the pelvis |
| 3 Varus stimulation point                | 6 Stimulation point for Hallux Valgus               |

## SENSOSTAT

Also here it is essential that the shoe remains safe according to the EN ISO 20345 and EN ISO 20347 although and orthopedic customization has been done to the insole. The sensorimotor insole SENSOstat has as well as the ORTHOstat insole been developed together with the specialist Doppler and your safety and occupational shoes will remain certified according to the EN ISO standards.

## FROM THE FEET TO THE HEAD

The stimulation points on the individually customized SENSOstat insole are sending direct feedback to the brain stem to adapt the triggering of the body. By this the body comes back into balance and facilitates standing and walking. The position of the feet is long-term corrected and relieves knees, hips, the pelvis and your spine.

## SENSOstat®

### The effects:

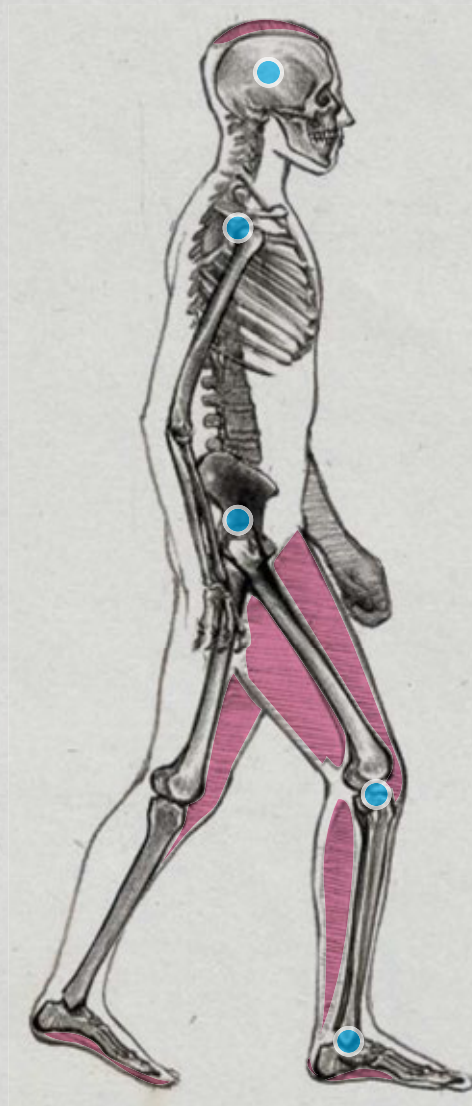
- ▶ Straightening up due to “Relearning”, motion sequence is being reprogrammed into the brain stem
- ▶ Body posture and gait pattern are being improved
- ▶ Triggering the brain by means of stimulation areas
- ▶ The muscles are being strengthened
- ▶ Selective impulses are being used to positively influence the locomotor system
- ▶ The joints are being relieved
- ▶ Wrong posture or motion patterns are being fixed systematically
- ▶ Discomfort is being resolved conservatively long-term

# 96

---

reflex zones are mostly positioned on the sole of the foot but also from the arch up to the ankle.

---



# 220.000.000

---

steps are walked by a person during his life which corresponds to 160.000 kilometers. We are walking 4 times around the globe.

---

# Classic



**SB**

**1000**



**31000**

CE, EN ISO 20345:2011 SB, A, E, FO, WRU, SRC  
 Size 36-46 | grained leather white | lining leather | heel patch micro-fiber | heel strap non-foldable, adjustable | instep strap adjustable | buckle fastening



**SB**

**1010**



**31010**

CE, EN ISO 20345:2011 SB, A, E, FO, WRU, SRC  
 Size 36-46 | grained leather black | lining leather | heel patch micro-fiber | heel strap non-foldable, adjustable | instep strap adjustable | buckle fastening








**SB**  **1001**

**SB**  **1011**

**SB**   **31001**

**SB**   **31011**

CE, EN ISO 20345:2011 SB, A, E, FO, WRU, SRC  
 Size 36-46 | microfiber white | lining and heel patch microfiber |  
 heel strap non-foldable, adjustable | instep strap adjustable |  
 buckle fastening

CE, EN ISO 20345:2011 SB, A, E, FO, WRU, SRC  
 Size 36-46 | microfiber black | lining and heel patch microfiber |  
 heel strap non-foldable, adjustable | instep strap adjustable |  
 buckle fastening



**S2** **1500**

CE, EN ISO 20345:2011 S2, SRC  
 Size 36-46 | grained leather white | instep strap adjustable | lining  
 and heel patch leather



light



# LIGHT

## THE RIGHT CHOICE

With the „light“ range we offer the right occupational shoe for everyone who emphasises on technically sophisticated footwear and makes no compromises between quality, comfort and visual appearance.

Thanks to the characteristic PU sole the shoe is light and flexible but also sturdy and the build in shock absorber provides an ideal cushioning effect. With this range we have developed a shoe with a moderate heel gradient which relieves strains on joints, heel and back muscles. Our uniquely designed replaceable insoles offer a high wearing comfort.

We equipped the models with a special lining: Silverpoint provides an antibacterial protection by built in silver ions with an odor reducing and moisture absorbing effect.

Technology on „light“ soles.

WWW.ABEBA.COM



## HIGHLIGHTS

- Special lining, respiration absorbing Silver ions, Silver fibers or Comfortemp®
- Sanitized® treated

## TECHNOLOGY

### ANTISTATIC/ ESD DISSIPATIVE

according to EN 61340

### ATEX

according to EN 61340-4-3, climate class 1

## OUTSOLE

### 1\_SRA slip resistance

according to EN ISO 20345:2011

### 2\_PU sole

lightweight

### 3\_Resistant

to fuel

### 4\_Shock absorber

cushioning

## INSOLES

### REPLACEABLE ACC WAVE (AIR CLIMA COMFORT)

art. 3556 (open),  
art. 3557 (closed),

for more information see notes on  
page 82



All styles of our light range are suitable for orthopedic insoles **ORTHOstat** and **SENSOstat**.



All styles of the light range are suitable for heel and foot lift.



LIGHT



SB

1041



31041

CE, EN ISO 20345:2011 SB, A, E, FO, SRA  
Size 35-48 | smooth leather white | lining with Silver Point |  
heel strap foldable, adjustable | instep area with elastic band |  
replaceable acc Wave insole (art. 3556)



SB

1042



31042

CE, EN ISO 20345:2011 SB, A, E, FO, SRA  
Size 35-48 | smooth leather black | lining with Silver Point |  
heel strap foldable, adjustable | instep area with elastic band |  
replaceable acc Wave insole (art. 3556)



SB

1035



31035

CE, EN ISO 20345:2011 SB, A, E, FO, SRA  
Size 35-48 | smooth leather black | lining with Silver Point | heel  
strap non-foldable, adjustable | instep area with elastic band |  
replaceable acc Wave insole (art. 3556)



SB

1030



31030

CE, EN ISO 20345:2011 SB, A, E, FO, SRA  
Size 35-48 | smooth leather white | lining with Silver Point | heel  
strap non-foldable, adjustable | instep area with elastic band |  
replaceable acc Wave insole (art. 3556)





**SB**

**1078**

**SB**



**31078**

CE, EN ISO 20345:2011 SB, A, E, FO, SRA  
 Size 35-43 | smooth leather white/ grey | lining with Silver Point |  
 heel strap non-foldable, adjustable, removable | instep area with  
 lacing | replaceable acc Wave insole (art. 3556)



**SB**

**1076**

**SB**



**31076**

CE, EN ISO 20345:2011 SB, A, E, FO, SRA  
 Size 35-43 | smooth leather white/ blue | lining with Silver Point |  
 heel strap non-foldable, adjustable, removable | instep area with  
 lacing | replaceable acc Wave insole (art. 3556)



**SB**

*A*micro

**1080**

**SB**



*A*micro

**31080**

CE, EN ISO 20345:2011 SB, A, E, FO, SRA  
 Size 35-43 | microfiber white | lining with Silver fibers | heel strap  
 non-foldable, adjustable, removable | instep area with lacing |  
 replaceable acc Wave insole (art. 3556)





**S1**

**1036**



**31036**

CE, EN ISO 20345:2011 S1, SRA  
 Size 35-48 | smooth leather black with grey **breathable textile inlays** | lining with Silver ions | double velcro fastening | replaceable acc Wave insole (art. 3557)



**S1**

**1031**



**31031**

CE, EN ISO 20345:2011 S1, SRA  
 Size 35-48 | smooth leather white with grey **breathable textile inlays** | lining with Silver ions | double velcro fastening | replaceable acc Wave insole (art. 3557)





S1

1056

S1



31056

CE, EN ISO 20345:2011 S1, SRA  
 Size 35-48 | smooth leather black with **breathable textile inlays** | lining with Silver Point | reflective stripes | replaceable acc Wave insole (art. 3557)



S1

1055

S1



31055

CE, EN ISO 20345:2011 S1, SRA  
 Size 35-48 | smooth leather black with **breathable textile inlays** | lining with Silver Point | reflective stripes | replaceable acc Wave insole (art. 3557)



S1

1058

S1



31058

CE, EN ISO 20345:2011 S1, SRA  
 Size 35-48 | smooth leather white with **breathable textile inlays** | lining with Silver Point | replaceable acc Wave insole (art. 3557)



S2

1051

S2



31051

CE, EN ISO 20345:2011 S2, SRA  
 Size 35-48 | smooth leather white | temperature regulating lining **Comfortemp®** with mPCM-Technology | replaceable acc Wave insole (art. 3557)





LIGHT



S2

1032



31032

CE, EN ISO 20345:2011 S2, SRA  
Size 35-48 | smooth leather white | lining with Silver ions | instep area with elastic band | replaceable acc Wave insole (art. 3557)



S2

1037



31037

CE, EN ISO 20345:2011 S2, SRA  
Size 35-48 | smooth leather black | lining with Silver ions | instep area with elastic band | replaceable acc Wave insole (art. 3557)



S2

A<sup>micro</sup>

1029



A<sup>micro</sup>

31029

CE, EN ISO 20345:2011 S2, SRA  
Size 35-48 | microfiber black | lining with Silver fibers | instep area with elastic band | replaceable acc Wave insole (art. 3557)



S2

A<sup>micro</sup>

1028



A<sup>micro</sup>

31028

CE, EN ISO 20345:2011 S2, SRA  
Size 35-48 | microfiber white | lining with Silver fibers | instep area with elastic band | replaceable acc Wave insole (art. 3557)







S2

1047

S2



31047

CE, EN ISO 20345:2011 S2, SRA

Size 35-48 | smooth leather white | lining with Silver Point | overcap with scratch-resistant coating | double velcro fastening | replaceable acc Wave insole (art. 3557)



S2

1023

S2



31023

CE, EN ISO 20345:2011 S2, SRA

Size 35-48 | smooth leather white | lining with Silver Point | double velcro fastening | reflective stripes | replaceable acc Wave insole (art. 3557)



S2

1024

S2



31024

CE, EN ISO 20345:2011 S2, SRA

Size 35-48 | smooth leather black | lining with Silver Point | double velcro fastening | reflective stripes | replaceable acc Wave insole (art. 3557)





LIGHT



S2

1033



31033

CE, EN ISO 20345:2011 S2, SRA  
Size 35-48 | smooth leather white | lining with Silver ions | reflective stripes | replaceable acc Wave insole (art. 3557)



S2

1038



31038

CE, EN ISO 20345:2011 S2, SRA  
Size 35-48 | smooth leather black | lining with Silver ions | reflective stripes | replaceable acc Wave insole (art. 3557)



S2

A<sup>micro</sup>

1027



A<sup>micro</sup>

31027

CE, EN ISO 20345:2011 S2, SRA  
Size 35-48 | microfiber black | lining with Silver fibres | replaceable acc Wave insole (art. 3557)



S2

A<sup>micro</sup>

1026



A<sup>micro</sup>

31026

CE, EN ISO 20345:2011 S2, SRA  
Size 35-48 | microfiber white | lining with Silver fibres | replaceable acc Wave insole (art. 3557)



# S3

**METALL FREE  
PENETRATION RESISTANCE**



**31874**

CE, EN ISO 20345:2011 S3, SRA  
Size 35-48 | smooth leather black, ATEX-design | lining with Silver Point | reflective stripes | replaceable acc Wave insole (art. 3557) | metal free penetration resistance



**31853**

CE, EN ISO 20345:2011 S3, SRA  
Size 35-48 | smooth leather black, ATEX-design | lining with Silver Point | reflective stripes | replaceable acc Wave insole (art. 3557) | metal free penetration resistance



uni6



# UNI6

EXPERIENCE THE FUTURE!

„Uni6“ combines design and technology to a perfect multifunctional shoe which is dedicated to the lifestyle of a sophisticated wearer by its sporty style, its excellent fit, by the choice of high-tech materials and a young and trendy sole design. For the design of the double layer outsole we took into account the most recent developments of work and sports medicine. The soft PU midsole ensures an even cushioning effect on the entire sole and the stabilization of the midfoot. The TPU outsole impresses technically by its ideal slip and abrasion resistance. Also for the upper we have chosen the most recent developments of materials. Hydrophobic leathers as well as a specific microfiber with breathable and at the same time water-repellent features are making these shoes especially suitable for wet areas. New innovative lining materials and the replaceable acc Wave insole ensure the best compensation of temperature and moisture for a perfect foot climate.

WWW.ABEBA.COM



## HIGHLIGHTS

- Special lining, breathable and respiration absorbing
- Soft PU midsole
- Sanitized® treated

## TECHNOLOGY

### ANTISTATIC/ ESD DISSIPATIVE

according to EN 61340

### ATEX

according to EN 61340-4-3,  
climate class 1

## OUTSOLE

### 1 SRC slip resistance

according to EN ISO 20345:2011

### 2 TPU sole

abrasion resistant

### 3 Resistant

to animal fats, oil and fuel

### 4 Flexing zones

walking comfort

## INSOLE

### REPLACEABLE ACC WAVE (AIR CLIMA COMFORT)

art. 3575,  
for more information see notes  
on page 82



All styles of our uni6 range  
are suitable for orthopedic  
insoles **ORTHOstat** and **SENSOstat**.



NEW



S1

A°micro

1795

S1



A°micro

31795

CE, EN ISO 20345:2011 S1, SRC  
Size 35-48 | microfiber white | lining, respiration absorbing |  
replaceable acc Wave insole (art. 3576)



NEW



S1

A°micro

1796

S1



A°micro

31796

CE, EN ISO 20345:2011 S1, SRC  
Size 35-48 | microfiber black | lining, respiration absorbing |  
replaceable acc Wave insole (art. 3576)



NEW



S2

A°micro

1741

S2



A°micro

31741

CE, EN ISO 20345:2011 S2, SRC  
Size 35-48 | microfiber black | lining with Silver Point | instep area  
with elastic band | replaceable acc Wave insole (art. 3576)



NEW



S2

A°micro

1740

S2



A°micro

31740

CE, EN ISO 20345:2011 S2, SRC  
Size 35-48 | microfiber white | lining with Silver Point | instep area  
with elastic band | replaceable acc Wave insole (art. 3576)





NEW



S2

1792

S2



31792

CE, EN ISO 20345:2011 S2, SRC  
 Size 35-48 | smooth leather black/ red | scratch-resistant coating in heel and toe area | breathable lining with Silver Point | reflective stripes | replaceable acc Wave insole (art. 3576)



NEW



S2

1790

S2



31790

CE, EN ISO 20345:2011 S2, SRC  
 Size 35-48 | smooth leather white/ grey | scratch-resistant coating in heel and toe area | breathable lining with Silver Point | reflective stripes | replaceable acc Wave insole (art. 3576)





UNIG



**S1**

**1760**



**31760**

CE, EN ISO 20345:2011 S1, SRC  
Size 35-48 | functional leather white with honeycomb pattern |  
water-repellent | scratch-proof | lining with Silver Point |  
replaceable acc Wave insole (art. 3576)



**S1**

**1761**



**31761**

CE, EN ISO 20345:2011 S1, SRC  
Size 35-48 | functional leather black with honeycomb pattern |  
water-repellent | scratch-proof | lining with Silver Point |  
replaceable acc Wave insole (art. 3576)







**S1**

**1762**

**S1**



**31762**

CE, EN ISO 20345:2011 S1, SRC  
 Size 35-48 | functional leather blue with honeycomb pattern |  
 water-repellent | scratch-proof | lining with Silver Point |  
 replaceable acc Wave insole (art. 3576)



**S1**

**1764**

**S1**



**31764**

CE, EN ISO 20345:2011 S1, SRC  
 Size 35-48 | functional leather red with honeycomb pattern |  
 water-repellent | scratch-proof | lining with Silver Point |  
 replaceable acc Wave insole (art. 3576)



**S1**

**1763**

**S1**



**31763**

CE, EN ISO 20345:2011 S1, SRC  
 Size 35-48 | functional leather navy blue | water-repellent |  
 scratch-proof | lining with Silver Point | replaceable acc Wave  
 insole (art. 3576)





S1

1730



31730

CE, EN ISO 20345:2011 S1, SRC  
Size 35-48 | smooth leather white, **microperforated** | lining with Silver Point | reflective stripes | replaceable acc Wave insole (art. 3576)



S1

1731



31731

CE, EN ISO 20345:2011 S1, SRC  
Size 35-48 | smooth leather black, **microperforated** | lining with Silver Point | reflective stripes | replaceable acc Wave insole (art. 3576)



S1

1721



31721

CE, EN ISO 20345:2011 S1, SRC  
Size 35-48 | velours black with **breathable textile inlays** | lining with Silver Point | reflective stripes | replaceable acc Wave insole (art. 3576)



S1

1720



31720

CE, EN ISO 20345:2011 S1, SRC  
Size 35-48 | smooth leather white with **breathable textile inlays** | lining with Silver Point | reflective stripes | replaceable acc Wave insole (art. 3576)





**S2**

**1771**

**S2**



**31771**

**S2**

**1770**

**S2**



**31770**

CE, EN ISO 20345:2011 S2, SRC  
Size 35-48 | smooth leather black | lining with Silver Point | reflective stripes | replaceable acc Wave insole (art. 3576)

CE, EN ISO 20345:2011 S2, SRC  
Size 35-48 | smooth leather white | lining with Silver Point | reflective stripes | replaceable acc Wave insole (art. 3576)





**S2**

A<sup>micro</sup>

**1780**

**S2**



A<sup>micro</sup>

**31780**

CE, EN ISO 20345:2011 S2, SRC  
Size 35-48 | microfiber white | lining with Silver Point | replaceable  
acc Wave insole (art. 3576)



**S2**

A<sup>micro</sup>

**1781**

**S2**




A<sup>micro</sup>

**31781**

CE, EN ISO 20345:2011 S2, SRC  
Size 35-48 | microfiber black | lining with Silver Point | replaceable  
acc Wave insole (art. 3576)






**S2**  **1784**

**S2**   **31784**

CE, EN ISO 20345:2011 S2, SRC  
 Size 35-48 | microfiber grey/ yellow | lining with Silver Point |  
 replaceable acc Wave insole (art. 3576)






**S2**  **1785**

**S2**   **31785**

CE, EN ISO 20345:2011 S2, SRC  
 Size 35-48 | microfiber grey/ black | lining with Silver Point |  
 replaceable acc Wave insole (art. 3576)






**S2**  **1783**

**S2**   **31783**

CE, EN ISO 20345:2011 S2, SRC  
 Size 35-48 | microfiber grey/ red | lining with Silver Point |  
 replaceable acc Wave insole (art. 3576)



**S2**  **1782**

**S2**   **31782**

CE, EN ISO 20345:2011 S2, SRC  
 Size 35-48 | microfiber grey/ blue | lining with Silver Point |  
 replaceable acc Wave insole (art. 3576)





S1

1700



31700

CE, EN ISO 20345:2011 S1, SRC  
Size 35-48 | smooth leather white with **breathable textile inlays** | lining, respiration absorbing | reflective stripes | replaceable acc Wave insole (art. 3576)



S1

1701



31701

CE, EN ISO 20345:2011 S1, SRC  
Size 35-48 | velours black with **breathable textile inlays** | lining, respiration absorbing | reflective stripes | replaceable acc Wave insole (art. 3576)



S1

1711



31711

CE, EN ISO 20345:2011 S1, SRC  
Size 35-48 | velours black | lining, respiration absorbing | replaceable acc Wave insole (art. 3576)



S2

1752



31752

CE, EN ISO 20345:2011 S2, SRC  
Size 35-48 | smooth leather black/ brown | lining, respiration absorbing | reflective stripes | replaceable acc Wave insole (art. 3576)





**S2**

**1750**

**S2**



**31750**

CE, EN ISO 20345:2011 S2, SRC  
 Size 35-48 | smooth leather white | lining, respiration absorbing |  
 replaceable acc Wave insole (art. 3576)



**S2**

**1751**

**S2**



**31751**

CE, EN ISO 20345:2011 S2, SRC  
 Size 35-48 | smooth leather black | lining, respiration absorbing |  
 replaceable acc Wave insole (art. 3576)



**S2**



**31753**

CE, EN ISO 20345:2011 S2, SRC  
 Size 35-48 | smooth leather black, ATEX-design | lining, respiration  
 absorbing | replaceable acc Wave insole (art. 3576)



**S3**



**31793**

CE, EN ISO 20345:2011 S3, SRC  
 Size 35-48 | smooth leather black, ATEX-design | lining, respiration  
 absorbing | replaceable acc Wave insole (art. 3576) | metal free  
 penetration resistance



anatom





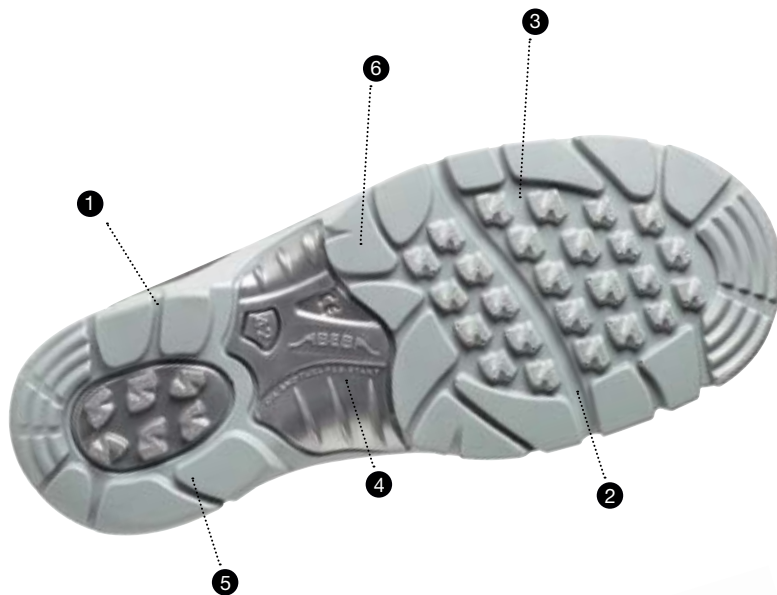
# ANATOM

## SAFETY WITH BEST WEARING COMFORT

Our anatom range is the right choice for everyone who sets value on having a sturdy shoe that guarantees maximum safety and offers best wearing comfort at the same time. Thanks to its double-layer PU sole the anatom combines these features perfectly. The compact, abrasion-proof and sturdy walking sole with its good slip resistance and secures your standing position by using a TPU torsion joint.

The foamed and cushioning middle sole gives you enjoyable comfort. An asymmetrical heel simulates that the shoe is already worn in and stops the higher lever force while walking through the rounded and lifted exterior. The vertical interior reduces the risk of bending inwards.

WWW.ABEBA.COM



## HIGHLIGHTS

- Special lining, respiration absorbing with Silver fibres or Silver Point
- Soft PU midsole
- Up to size 52
- Wide fit
- Sanitized® treated

## TECHNOLOGY

**ANTISTATIC/ ESD DISSIPATIVE**  
according to EN 61340

**ATEX**  
according to EN 61340-4-3,  
climate class 1

**ASYMMETRICAL HEEL**



## OUTSOLE

- 1 SRC slip resistance**  
according to EN ISO 20345:2011
- 2 PU sole**  
abrasion resistant
- 3 Self cleaning profile**
- 4 TPU torsion waist**
- 5 Ankle protection**  
high lateral stability
- 6 Resistant**  
to fuel

## INSOLES

**REPLACEABLE ACC WAVE  
(AIR CLIMA COMFORT)**

art. 3582 (open),  
art. 3580 (closed),  
for more information see notes on page 82



All styles of our anatom range are suitable for orthopedic insoles **ORTHOstat** and **SENSOstat**.



SB

2120

SB



32120

CE, EN ISO 20345:2011 SB, A, E, WRU, SRC  
Size 36-52 | microfiber white | lining with Silver fibres | heel strap non-foldable, adjustable | instep strap adjustable, with elastic band | replaceable acc Wave insole (art. 3582)



SB

2125

SB



32125

CE, EN ISO 20345:2011 SB, A, E, WRU, SRC  
Size 36-52 | microfiber black | lining with Silver fibres | heel strap non-foldable, adjustable | instep strap adjustable, with elastic band | replaceable acc Wave insole (art. 3582)



S1

2615

S1



32615

CE, EN ISO 20345:2011 S1, SRC  
Size 36-50 | microfiber black, **perforated** | lining with Silver fibres | double velcro fastening | reflective stripes | replaceable acc Wave insole (art. 3580)



S1

2616

S1



CE, EN ISO 20345:2011 S1, SRC  
Size 36-50 | microfiber white, **perforated** | lining with Silver fibres | double velcro fastening | reflective stripes | replaceable acc Wave insole (art. 3580)



**2626**

CE, EN ISO 20345:2011 S1, SRC

Size 36-52 | microfiber white **with breathable textile inlays** | lining with Silver fibres | reflective stripes | replaceable acc Wave insole (art. 3580)**S2****2140****32140**

CE, EN ISO 20345:2011 S2, SRC

Size 36-48 | microfiber white | lining with Silver fibres | double velcro fastening | replaceable acc Wave insole (art. 3580)

**S2****2131****32131**

CE, EN ISO 20345:2011 S2, SRC

Size 36-50 | microfiber white | lining with Silver fibres | replaceable acc Wave insole (art. 3580)

**S2****2136****32136**

CE, EN ISO 20345:2011 S2, SRC

Size 36-50 | microfiber black | lining with Silver fibres | replaceable acc Wave insole (art. 3580)





**S2**

**2130**

**S2**

**2135**



**32130**



**32135**

CE, EN ISO 20345:2011 S2, SRC  
Size 36-52 | microfiber white | lining with Silver fibres | instep strap adjustable, with elastic band | replaceable acc Wave insole (art. 3580)

CE, EN ISO 20345:2011 S2, SRC  
Size 36-52 | microfiber black | lining with Silver fibres | instep strap adjustable, with elastic band | replaceable acc Wave insole (art. 3580)



**S2****2172****S2****32172**

CE, EN ISO 20345:2011 S2, SRC  
 Size 36-50 | microfiber white | lining with Silver fibres | scratch-resistant coating in heel and toe area | reflective stripes | replaceable acc Wave insole (art. 3580)

A<sup>®</sup>micro**S2****2171****S2****32171**

CE, EN ISO 20345:2011 S2, SRC  
 Size 36-50 | microfiber black | lining with Silver fibres | scratch-resistant coating in heel and toe area | reflective stripes | replaceable acc Wave insole (art. 3580)

A<sup>®</sup>micro**S3****2281****S3****32281**

CE, EN ISO 20345:2011 S3, SRC  
 Size 36-48 | microfiber black | **cold insulating** lining | triple velcro fastening | cushioned ankle support | reflective stripes | replaceable acc Wave insole (art. 3580) | metal free penetration resistance

A<sup>®</sup>micro**S3****2280****S3****32280**

CE, EN ISO 20345:2011 S3, SRC  
 Size 36-48 | microfiber white | **cold insulating** lining | triple velcro fastening | cushioned ankle support | reflective stripes | replaceable acc Wave insole (art. 3580) | metal free penetration resistance

A<sup>®</sup>micro



1111

CE, EN ISO 20345:2011 S1, SRC  
Size 36-50 | smooth leather black, perforated with textile | lining with Silver Point | instep strap adjustable | replaceable acc Wave insole (art. 3580)



2189



32189

CE, EN ISO 20345:2011 S1, SRC  
Size 36-52 | velours black with **breathable textile inlays** | lining with Silver Point | instep strap adjustable | reflective stripes | replaceable acc Wave insole (art. 3580)



**1122**

CE, EN ISO 20345:2011 S1, SRC  
 Size 36-50 | nubuck black with **breathable textile inlays** | lining with Silver Point | replaceable acc Wave insole (art. 3580)

**32147**

CE, EN ISO 20345:2011 S1, SRC  
 Size 36-50 | velours navy blue with **breathable textile inlays** | lining with Silver Point | scratch-resistant coating in heel area | reflective stripes | replaceable acc Wave insole (art. 3580)

**2145****32145**

CE, EN ISO 20345:2011 S1, SRC  
 Size 36-50 | velours black with **breathable textile inlays** | lining with Silver Point | reflective stripes | replaceable acc Wave insole (art. 3580)

**2156****32156**

CE, EN ISO 20345:2011 S2, SRC  
 Size 36-50 | smooth leather black | lining with Silver Point | scratch-resistant coating in heel and toe area | reflective stripes | replaceable acc Wave insole (art. 3580)





**ANATOM**



**S2**

**2177**

**S2**



**32177**

CE, EN ISO 20345:2011 S2, SRC  
Size 36-48 | lining with Silver Point | highly abrasion resistant  
multifunctional upper material „run-dry“ black | scratch-resistant  
coating in heel area | replaceable acc Wave insole (art. 3580)



**S2**

**2178**

**S2**



**32178**

CE, EN ISO 20345:2011 S2, SRC  
Size 36-48 | lining with Silver Point | highly abrasion resistant  
multifunctional upper material „run-dry“ black | scratch-resistant  
coating in heel area | reflective stripes | replaceable acc Wave insole  
(art. 3580)







S2

2168

S2



32168

CE, EN ISO 20345:2011 S2, SRC

Size 36-50 | smooth leather black | lining with Silver Point |  
scratch-resistant coating in heel and toe area | reflective stripes |  
replaceable acc Wave insole (art. 3580)



S2

2169

S2



32169

CE, EN ISO 20345:2011 S2, SRC

Size 36-50 | smooth leather black | lining with Silver Point |  
scratch-resistant coating in heel and toe area | reflective stripes |  
replaceable acc Wave insole (art. 3580) | **low cut**





ANATOM



NEW



S1P

A° micro

2290

S1P



A° micro

32290

CE, EN ISO 20345:2011 S1P, SRC

Size 36-48 | microfiber grey/ blue with **breathable textile inlays** | breathable Mesh lining | replaceable acc Wave insole (art. 3580) | metal free penetration resistance



NEW



S1P

A° micro

2292

S1P



A° micro

32292

CE, EN ISO 20345:2011 S1P, SRC

Size 36-48 | microfiber grey/ orange with **breathable textile inlays** | breathable Mesh lining | replaceable acc Wave insole (art. 3580) | metal free penetration resistance





NEW



S1P



A<sup>micro</sup>

32291

CE, EN ISO 20345:2011 S1P, SRC  
Size 36-48 | microfiber grey/ yellow with **breathable textile inlays** | breathable Mesh lining | replaceable acc Wave insole (art. 3580) | metal free penetration resistance



# S1P

**METAL FREE  
PENETRATION RESISTANCE**





ANATOM



S1P

2289

S1P



32289

CE, EN ISO 20345:2011 S1P, SRC

Size 36-48 | velours black with **breathable textile inlays** | lining with Silver Point | instep strap adjustable | reflective stripes | replaceable acc Wave insole (art. 3580) | metal free penetration resistance



S1P / S3

METAL FREE PENETRATION RESISTANCE



S1P



32247

CE, EN ISO 20345:2011 S1P, SRC

Size 36-48 | velours navy blue with **breathable textile inlays** | lining with Silver Point | scratch-resistant coating in heel area | reflective stripes | replaceable acc Wave insole (art. 3580) | metal free penetration resistance



S1P



32243

CE, EN ISO 20345:2011 S1P, SRC

Size 36-48 | smooth leather black with **breathable textile inlays**, ATEX-design | lining with Silver Point | reflective stripes | replaceable acc Wave insole (art. 3580) | metal free penetration resistance



**S3****2256****S3****32256**

CE, EN ISO 20345:2011 S3, SRC  
 Size 36-52 | smooth leather black | lining with Silver Point |  
 scratch-resistant coating in heel and toe area | reflective stripes |  
 replaceable acc Wave insole (art. 3580) | metal free penetration  
 resistance

**S3****32254**

CE, EN ISO 20345:2011 S3, SRC  
 Size 36-48 | smooth leather black, ATEX-design | lining with Silver  
 Point | scratch-resistant coating in heel and toe area | replaceable  
 acc Wave insole (art. 3580) | metal free penetration resistance

**S3****2268****S3****32268**

CE, EN ISO 20345:2011 S3, SRC  
 Size 36-52 | smooth leather black | lining with Silver Point |  
 scratch-resistant coating in heel and toe area | reflective stripes |  
 replaceable acc Wave insole (art. 3580) | metal free penetration  
 resistance

**S3****32270**

CE, EN ISO 20345:2011 S3, SRC  
 Size 36-48 | smooth leather black, ATEX-design | lining with Silver  
 Point | scratch-resistant coating in heel and toe area | replaceable  
 acc Wave insole (art. 3580) | metal free penetration resistance



**CRAWLER**



# CRAWLER

VISIONS BECOME REALITY

3 CAPS, 1 SOLE

ABEBA's idea was to create a safety shoe with maximum technical performance paired with uncompromising comfort, sporty design and the lightness of trainers. That dream has now come true with our new ABEBA „Crawler“. ABEBA's very first range of safety shoes with aluminium toe-cap! The „Crawler“ captivates by his unique design of the outsole with features like asymmetrical heel, lifted front end, integrated external heel stabiliser and flexing zones. Besides the special design of the outsole the selection of top quality upper and lining materials as well as the replaceable acc Wave insoles grant maximum comfort and assist in creating a sporty look.

WWW.3IN1.ABEBA.COM



3iN1 - 3 CAPS, 1 SOLE



## HIGHLIGHTS

- Special lining, respiration absorbing with Silver fibres
- PU midsole, foamed
- Wide fit
- Sanitized® treated

## TECHNOLOGY

**ANTISTATIC/ ESD DISSIPATIVE**  
according to EN 61340

**ATEX**  
according to EN 61340-4-3,  
climate class 1

**ASYMMETRICAL HEEL**



## OUTSOLE

- 1\_SRC slip resistance**  
according to ISO 20345:2011
- 2\_TPU sole**  
abrasion resistant
- 3\_Comfortable cushioning effect and high flexibility**
- 4\_Joint stabiliser**
- 5\_Flexural zones optimize your natural motion sequence**

## INSOLES

**REPLACEABLE ACC WAVE  
(AIR CLIMA COMFORT)**

art. 3577 (closed) aluminium/ steel,  
art. 3579 (open) aluminium/ steel,  
art. 3578 composite,  
for more information see notes  
on page 82



All styles of our crawler range  
are suitable for orthopedic  
insoles **ORTHOstat** and **SENSOstat**.



CRAWLER - ALU



# CRAWLER

## ALU

NEW



SB

A<sup>micro</sup>

4555

SB



A<sup>micro</sup>

34555

CE, EN ISO 20345:2011 SB, A, E, FO, SRC  
Size 36-48 | microfiber white | scratch-resistant coating in toe area | breathable lining with Silver Point | heel strap non-foldable, adjustable | instep strap adjustable, with elastic band | replaceable acc Wave insole (art. 3579) | **aluminium toe-cap**



NEW



SB

A<sup>micro</sup>

4556

SB



A<sup>micro</sup>

34556

CE, EN ISO 20345:2011 SB, A, E, FO, SRC  
Size 36-48 | microfiber black | scratch-resistant coating in toe area | breathable lining with Silver Point | heel strap non-foldable, adjustable | instep strap adjustable, with elastic band | replaceable acc Wave insole (art. 3579) | **aluminium toe-cap**







S1

4541

S1



34541

NEW

CE, EN ISO 20345:2011 S1, SRC

Size 36-48 | velours black/ blue with **breathable textile inlays** | scratch-resistant coating in heel and toe area | breathable lining with Silver Point | instep strap adjustable | replaceable acc Wave insole (art. 3577) | **aluminium toe-cap**



NEW



S1

4521

S1



34521

CE, EN ISO 20345:2011 S1, SRC

Size 36-48 | leather black/ blue with **breathable textile inlays** | breathable Mesh lining | replaceable acc Wave insole (art. 3577) | **aluminium toe-cap**



NEW



S1

4523

S1



34523

CE, EN ISO 20345:2011 S1, SRC

Size 36-48 | leather black/ orange with **breathable textile inlays** | breathable Mesh lining | replaceable acc Wave insole (art. 3577) | **aluminium toe-cap**





CRAWLER - ALU



S1

4580

S1



34580

CE, EN ISO 20345:2011 S1, SRC  
Size 36-48 | smooth leather white/ blue | lining with Silver Point |  
replaceable acc Wave insole (art. 3577) | **aluminium toe-cap**



S1

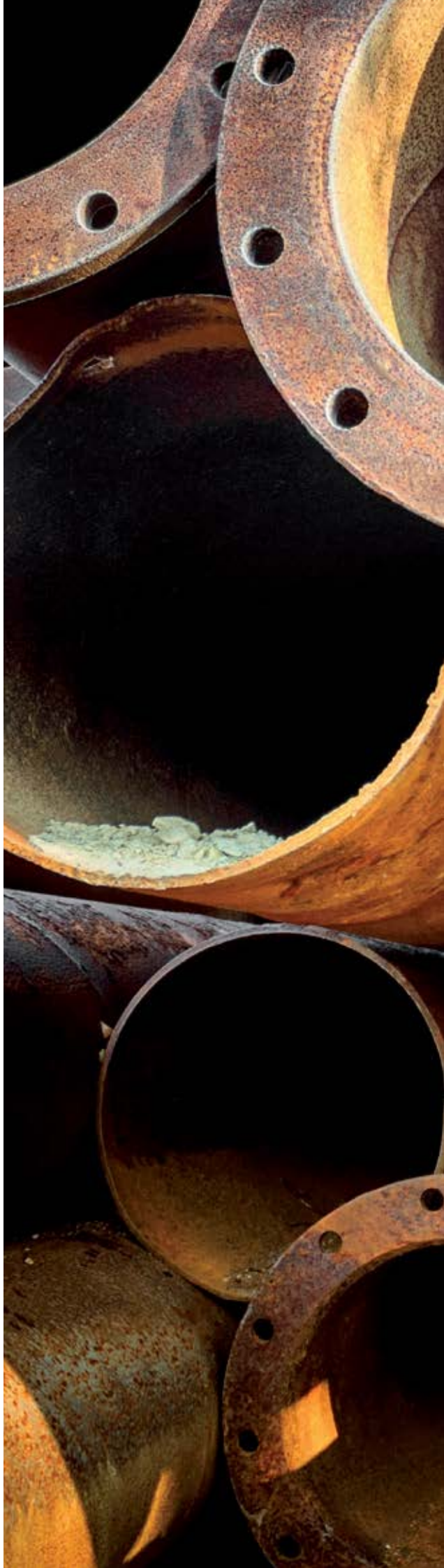
4581

S1



34581

CE, EN ISO 20345:2011 S1, SRC  
Size 36-48 | velours black/ blue | lining with Silver Point |  
replaceable acc Wave insole (art. 3577) | **aluminium toe-cap**





S1

4582

S1



34582

CE, EN ISO 20345:2011 S1, SRC

Size 36-48 | velours black/ yellow | lining with Silver Point |  
replaceable acc Wave insole (art. 3577) | **aluminium toe-cap**

S1

4584

S1



34584

CE, EN ISO 20345:2011 S1, SRC

Size 36-48 | smooth leather white/ black | lining with Silver Point |  
replaceable acc Wave insole (art. 3577) | **aluminium toe-cap**



S1

4570



34570

CE, EN ISO 20345:2011 S1, SRC  
Size 36-48 | smooth leather white with **breathable textile inlays** | scratch-resistant coating in heel and toe area | lining with Silver Point | reflective stripes | replaceable acc Wave insole (art. 3577) | **aluminium toe-cap**



S1

4571



34571

CE, EN ISO 20345:2011 S1, SRC  
Size 36-48 | velours black/ blue with **breathable textile inlays** | scratch-resistant coating in heel and toe area | lining with Silver Point | reflective stripes | replaceable acc Wave insole (art. 3577) | **aluminium toe-cap**



S1

4572



34572

CE, EN ISO 20345:2011 S1, SRC  
Size 36-48 | velours black/ yellow with **breathable textile inlays** | scratch-resistant coating in heel and toe area | lining with Silver Point | reflective stripes | replaceable acc Wave insole (art. 3577) | **aluminium toe-cap**





**S2**

**4573**



**34573**

CE, EN ISO 20345:2011 S2, SRC  
 Size 36-48 | smooth leather white | scratch-resistant coating in heel and toe area | lining with Silver Point | reflective stripes | replaceable acc Wave insole (art. 3577) | **aluminium toe-cap**



**S2**

**4574**



**34574**

CE, EN ISO 20345:2011 S2, SRC  
 Size 36-48 | smooth leather black | scratch-resistant coating in heel and toe area | lining with Silver Point | reflective stripes | replaceable acc Wave insole (art. 3577) | **aluminium toe-cap**





**S1** **4510**

**S1** **34510**

CE, EN ISO 20345:2011 S1, SRC  
Size 36-48 | microfiber white/ grey with **breathable textile inlays** | lining with Silver Point | reflective stripes | replaceable acc Wave insole (art. 3577) | **aluminium toe-cap**



**S1** **4511**

**S1** **34511**

CE, EN ISO 20345:2011 S1, SRC  
Size 36-48 | microfiber black/ blue with **breathable textile inlays** | lining with Silver Point | reflective stripes | replaceable acc Wave insole (art. 3577) | **aluminium toe-cap**



**S1** **4512**

**S1** **34512**

CE, EN ISO 20345:2011 S1, SRC  
Size 36-48 | microfiber black/ red with **breathable textile inlays** | lining with Silver Point | reflective stripes | replaceable acc Wave insole (art. 3577) | **aluminium toe-cap**



**S1** **4514**

**S1** **34514**

CE, EN ISO 20345:2011 S1, SRC  
Size 36-48 | microfiber white/ black with **breathable textile inlays** | lining with Silver Point | reflective stripes | replaceable acc Wave insole (art. 3577) | **aluminium toe-cap**





S2

micro

4500

S2



micro

34500

CE, EN ISO 20345:2011 S2, SRC  
 Size 36-48 | microfiber white/ grey | seamless upper | lining with Silver Point | reflective stripes | replaceable acc Wave insole (art. 3577) | **aluminium toe-cap**



S2

micro

4501

S2



micro

34501

CE, EN ISO 20345:2011 S2, SRC  
 Size 36-48 | microfiber black/ blue | seamless upper | lining with Silver Point | reflective stripes | replaceable acc Wave insole (art. 3577) | **aluminium toe-cap**



S2

micro

4502

S2



micro

34502

CE, EN ISO 20345:2011 S2, SRC  
 Size 36-48 | microfiber black/ red | seamless upper | lining with Silver Point | reflective stripes | replaceable acc Wave insole (art. 3577) | **aluminium toe-cap**



S2

micro

4504

S2

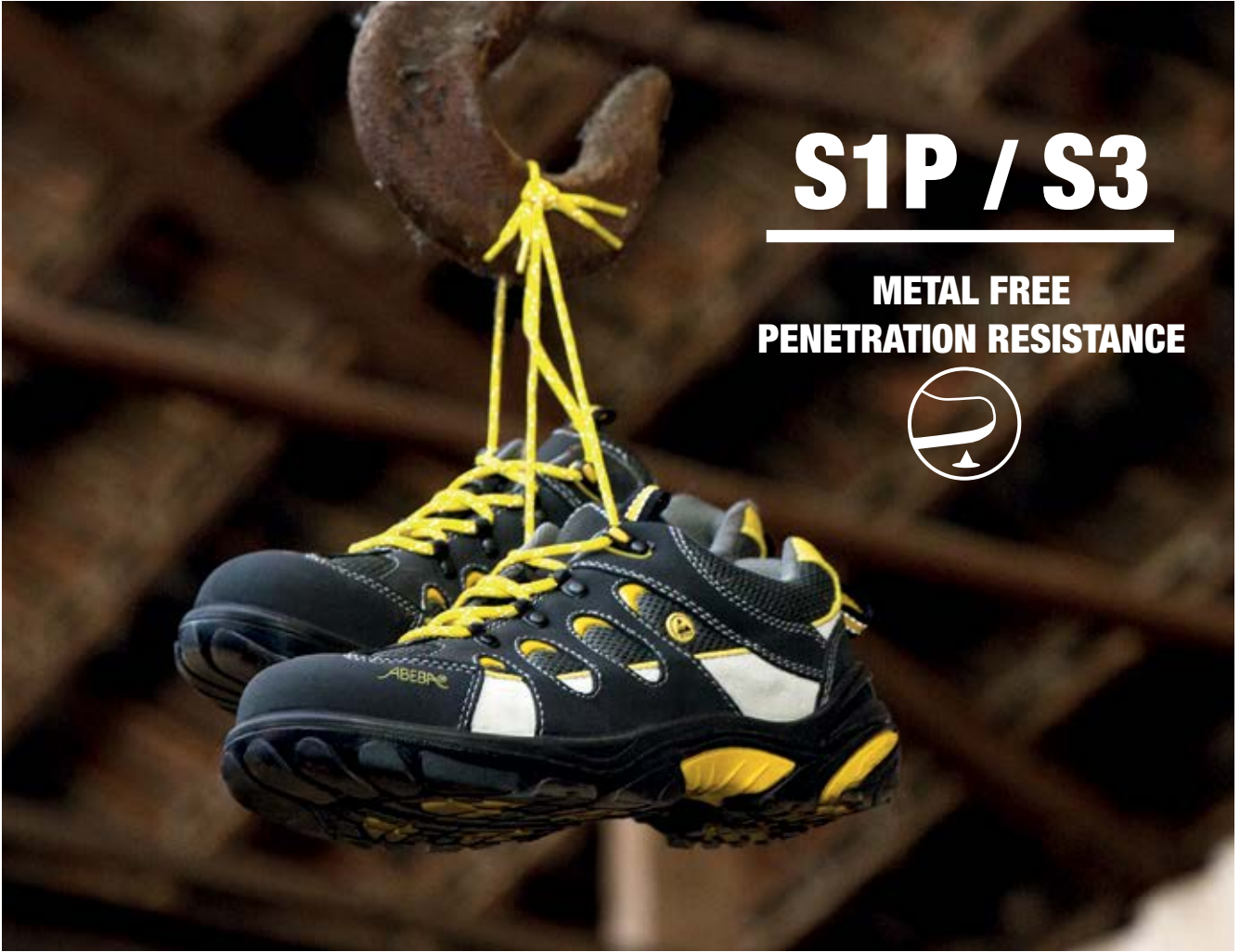


micro

34504

CE, EN ISO 20345:2011 S2, SRC  
 Size 36-48 | microfiber white/ black | seamless upper | lining with Silver Point | reflective stripes | replaceable acc Wave insole (art. 3577) | **aluminium toe-cap**





# S1P / S3

**METAL FREE  
PENETRATION RESISTANCE**



**34822**

**NEW**

CE, EN ISO 20345:2011 S1P, SRC  
Size 36-48 | leather black/ yellow with **breathable textile inlays** |  
breathable Mesh lining | replaceable acc Wave insole (art. 3577) |  
metal free penetration resistance | **aluminium toe-cap**





**S1P****4883****S1P****34883**

CE, EN ISO 20345:2011 S1P, SRC  
 Size 36-48 | smooth leather black/ white | lining with Silver Point |  
 replaceable acc Wave insole (art. 3577) | metal free penetration  
 resistance | **aluminium toe-cap**

**S1P**A<sup>micro</sup>**34813**

CE, EN ISO 20345:2011 S1P, SRC  
 Size 36-48 | microfiber black/ yellow with **breathable textile  
 inlays** | lining with Silver Point | reflective stripes | replaceable acc  
 Wave insole (art. 3577) | metal free penetration resistance |  
**aluminium toe-cap**

**S3****4875****S3****34875**

CE, EN ISO 20345:2011 S3, SRC  
 Size 36-48 | smooth leather grey/ black | scratch-resistant coating  
 in heel and toe area | lining with Silver Point | reflective stripes |  
 replaceable acc Wave insole (art. 3577) | metal free penetration  
 resistance | **aluminium toe-cap**

**S3**A<sup>micro</sup>**34803**

CE, EN ISO 20345:2011 S3, SRC  
 Size 36-48 | microfiber black/ yellow | seamless upper | lining with  
 Silver Point | reflective stripes | replaceable acc Wave insole (art.  
 3577) | metal free penetration resistance | **aluminium toe-cap**





# CRAWLER

## STEEL



NEW



S2

4625

S2



34625

CE, EN ISO 20345:2011 S2, SRC  
Size 36-48 | smooth leather „pull-up“ look grey | scratch-resistant coating in heel area | breathable lining with Silver ions | replaceable acc Wave insole (art. 3577) | **steel toe-cap**



NEW



S2

4633

S2



34633

CE, EN ISO 20345:2011 S2, SRC  
Size 36-48 | smooth leather black/ orange | scratch-resistant coating in heel area | breathable lining with Silver ions | replaceable acc Wave insole (art. 3577) | **steel toe-cap**





NEW



S2

4621

S2



34621

CE, EN ISO 20345:2011 S2, SRC  
 Size 36-48 | velours black/ blue | scratch-resistant coating in heel and toe area | breathable lining with Silver Point | replaceable acc Wave insole (art. 3577) | **steel toe-cap**



NEW



S2

4651

S2



34651

CE, EN ISO 20345:2011 S2, SRC  
 Size 36-48 | velours black/ blue | scratch-resistant coating in heel and toe area | breathable lining with Silver ions | replaceable acc Wave insole (art. 3577) | **steel toe-cap**



NEW



S3

34222



CE, EN ISO 20345:2011 S3, SRC  
 Size 36-48 | smooth leather grey/ yellow | scratch-resistant coating in heel and toe area | breathable lining with Silver ions | replaceable acc Wave insole (art. 3577) | metal free penetration resistance | **steel toe-cap**



NEW



S3

34252



CE, EN ISO 20345:2011 S3, SRC  
 Size 36-48 | smooth leather grey/ yellow | scratch-resistant coating in heel and toe area | breathable lining with Silver ions | replaceable acc Wave insole (art. 3577) | metal free penetration resistance | **steel toe-cap**





CRAWLER - COMPOSITE



S1

4721

S1



34721

CE, EN ISO 20345:2011 S1, SRC  
Size 35-47 | smooth leather black/ yellow, **perforated** | scratch-resistant coating in heel and toe area | breathable lining with Silver ions | replaceable acc Wave insole (art. 3578) | **composite toe-cap**



S1

4711

S1



34711

CE, EN ISO 20345:2011 S1, SRC  
Size 35-47 | smooth leather black with **breathable textile inlays** black | lining, respiration absorbing | replaceable acc Wave insole (art. 3578) | **composite toe-cap**



# CRAWLER

---

# COMPOSITE





S2

4701

S2



34701

CE, EN ISO 20345:2011 S2, SRC

Size 35-47 | smooth leather black | scratch-resistant coating in heel and toe area | breathable lining with Silver ions | replaceable acc Wave insole (art. 3578) | **composite toe-cap**



Static Control



# STATIC CONTROL

## HIGH-TECH FOOTWEAR

The idea behind our „Static Control“ range is to design a shoe that is light and sportive and scores with a maximum of technology and comfort. It is very versatile and can be used in almost all industries.

The rubber walking sole convinces with its sophisticated design: the drop wire thread pattern has got a softer blend that makes sure the grip is at its best. The cross thread pattern in a harder blend on the exterior gives you high side assistance and secure standing.

Decoupled joint stabilizers support your joints well and bring torsion control. A foamed, cushioning PU midsole relieves joints and ligaments additionally. The built in mcc composite cap is extremely shock-resistant, highly elastic (viscous) and 40 % lighter than steel.

All styles are fitted with the replaceable acc Wave insole which improves a healthy foot climate.

WWW.ABEBA.COM



## HIGHLIGHTS

- Mcc mono coque cap (200 Joule)
- PU-midsole
- Sanitized® treated

## TECHNOLOGY

**ANTISTATIC/ ESD DISSIPATIVE**  
according to EN 61340

**ATEX**  
according to EN 61340-4-3,  
climate class 1

## OUTSOLE

- 1\_SRA slip resistance**  
according to EN ISO 20345:2011
- 2\_Rubber outsole**  
maximum grip
- 3\_Torsions waist**  
hard rubber compound
- 4\_Ankle protection**  
high lateral stability
- 5\_Resistant**  
to acid, base and fuel

## INSOLE

**REPLACEABLE ACC WAVE  
(AIR CLIMA COMFORT)**

art. 3553,  
for more information see notes on  
page 82



All styles of our Static Control range  
are suitable for orthopedic  
insoles **ORTHOstat** and **SENSOstat**.





STATIC CONTROL



S1



1275

CE, EN ISO 20345:2011 S1, SRA\*

Size 36-47 | leather black with scratch-resistant carbon coating and **breathable textile inlays** | lining with Silver Point | double velcro fastening | reflective stripes | replaceable acc Wave insole (art. 3553)



S1

1378

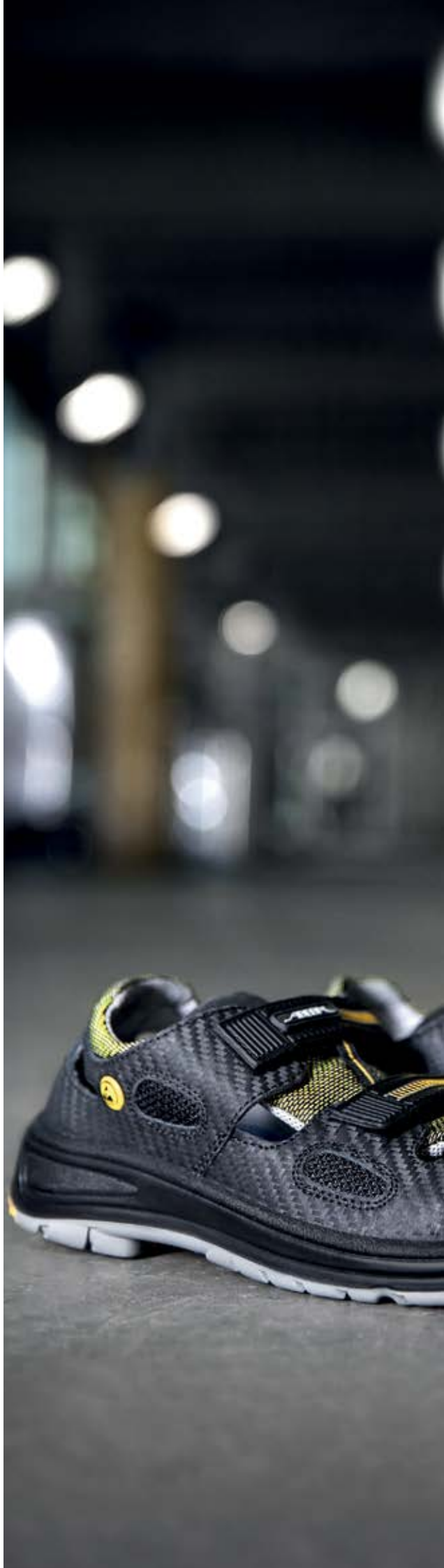
S1



31378

CE, EN ISO 20345:2011 S1, SRA\*

Size 36-47 | velours anthracite with **breathable textile inlays** | lining with Silver Point | double velcro fastening | reflective stripes | replaceable acc Wave insole (art. 3553)







S1



1272

CE, EN ISO 20345:2011 S1, SRA\*  
 Size 36-47 | smooth leather/ velours black with **breathable textile inlays** | lining with Silver Point | reflective stripes | replaceable acc Wave insole (art. 3553)



S1

1366

S1



31366

CE, EN ISO 20345:2011 S1, SRA\*  
 Size 36-47 | velours anthracite | lining with Silver Point | reflective stripes | replaceable acc Wave insole (art. 3553)



\* certification submitted



STATIC CONTROL



S2



A<sup>micro</sup>

1392

S2



A<sup>micro</sup>

31392

CE, EN ISO 20345:2011 S2, SRA\*  
Size 36-47 | microfiber white | lining with Silver fibers | instep area with elastic band | replaceable acc Wave insole (art. 3553)



S2



1362

S2



31362

CE, EN ISO 20345:2011 S2, SRA\*  
Size 36-47 | smooth leather black | lining with Silver Point | reflective stripes | replaceable acc Wave insole (art. 3553)



S2



1361

S2



31361

CE, EN ISO 20345:2011 S2, SRA\*  
Size 36-47 | smooth leather white | lining with Silver Point | reflective stripes | replaceable acc Wave insole (art. 3553)





**31473**

CE, EN ISO 20345:2011 S1P, SRA\*  
 Size 36-47 | smooth leather black, ATEX-design with **breathable textile inlays** | lining with Silver Point | reflective stripes | replaceable acc Wave insole (art. 3553) | metal free penetration resistance



**31474**

CE, EN ISO 20345:2011 S3, SRA\*  
 Size 36-47 | smooth leather black, ATEX-design | lining with Silver Point | reflective stripes | replaceable acc Wave insole (art. 3553) | metal free penetration resistance



**31475**

CE, EN ISO 20345:2011 S3, SRA\*  
 Size 36-47 | smooth leather black, ATEX-design | lining with Silver ions | reflective stripes | replaceable acc Wave insole (art. 3553) | metal free penetration resistance



\* certification submitted

**BUSINESS  
MEN**





# BUSINESS MEN

## THE SAFETY SHOE FOR SOPHISTICATED CLIENTS

If you need a quality safety shoe that also goes well with a suit, don't look any further.

You may choose between genuine wingtip style with Chillyperforation and a puristic model with Derby-cut. We now have built the bridge between discreet, elegant looks, functionality and safety:

All models were manufactured from water-repellent cow leather. The microfiber lining absorbs your sweat and provides good foot climate. The natural surface and structure of the leather stays the same because of its special dyeing method. And you don't have to miss the wearing comfort due to of the comfortable footbed and the rubber walking sole. The sole also displays a very good slip resistance and is oil and fuel-resistant.

To protect your feet from any impacts, we have equipped the „Business Men“ range with naturally formed steel toe caps.

[WWW.ABEBA.COM](http://WWW.ABEBA.COM)

### HIGHLIGHTS

- Steel toe-cap (200 joules) according to DIN EN 12568
- Special lining, respiration absorbing
- Resistant to oil and fuel



**33240**

CE, EN ISO 20345:2011 S2, SRA  
Size 36-48 | smooth leather black | lining, respiration absorbing



**33230**

CE, EN ISO 20345:2011 S2, SRA  
Size 36-48 | smooth leather black | lining, respiration absorbing



# Protektor



## HIGHLIGHT

- Replaceable insoles

## OUTSOLE

**1\_Antistatic**

**2\_SRC slip resistance**

according to EN ISO 20345:2011

**3\_PU sole**

abrasion resistant



**S2**

**1600**

CE, EN ISO 20345:2011 S2, SRC  
Size 36-48 | smooth leather white | lining leather



**S2**

**1602**

CE, EN ISO 20345:2011 S2, SRC  
Size 36-48 | smooth leather black | lining leather



**S2**

**1632**

CE, EN ISO 20345:2011 S2, SRC  
Size 36-48 | smooth leather black | lining leather | cushioned ankle support | reflective stripes



**S2**

**1630**

CE, EN ISO 20345:2011 S2, SRC  
Size 36-48 | smooth leather white | lining leather | cushioned ankle support | reflective stripes





**PROTEKTOR LINE**



**S3**

**1610**

CE, EN ISO 20345:2011 S3, SRC  
Size 36-48 | smooth leather white | lining leather | penetration resistance



**S3**

**PENETRATION RESISTANCE**



**S3**

**2232**

CE, EN ISO 20345:2011 S3, SRC  
Size 36-48 | smooth leather black | lining leather | double velcro fastening | penetration resistance



**S3**

**2230**

CE, EN ISO 20345:2011 S3, SRC  
Size 36-48 | smooth leather white | lining leather | double velcro fastening | penetration resistance







**S3**

**1635**

CE, EN ISO 20345:2011 S3, SRC  
 Size 36-48 | smooth leather white | lining leather | cushioned ankle support | reflective stripes | penetration resistance



**S3**

**1645**

CE, EN ISO 20345:2011 S3, SRC  
 Size 36-48 | smooth leather white | lining leather | triple velcro fastening | cushioned ankle support | reflective stripes | penetration resistance



**S3**

**1655**

CE, EN ISO 20345:2011 S3, SRC  
 Size 36-48 | smooth leather black | lining leather | triple velcro fastening | cushioned ankle support | reflective stripes | penetration resistance





# INSOLES

## ACC WAVE

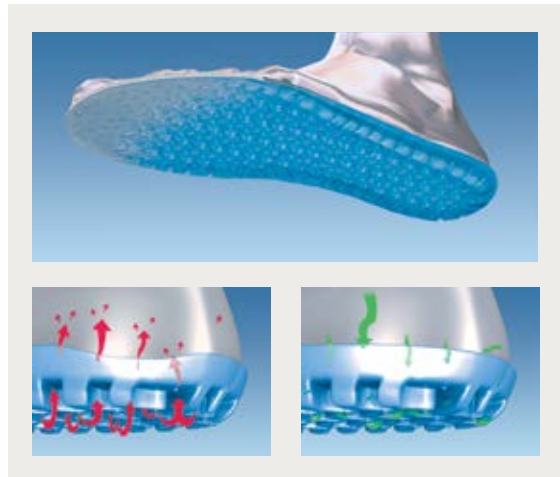
replaceable acc Wave insole (air clima comfort) | relieves muscles, ligaments and spine | cushioning over the whole surface | climate regulating and comfortable | antistatic/ ESD dissipative according to EN 61340

3556 »light«	open	Size 35–48
3557 »light«	closed	Size 35–48
3553 »Static Control«		Size 36–47
3582 »anatom«	open	Size 36–52
3580 »anatom«	closed	Size 36–52
3576 »uni6«		Size 35–48
3577 »crawler Alu/ Steel«	closed	Size 36–48
3579 »crawler Alu/ Steel«	open	Size 36–48
3578 »crawler Composite«		Size 35–47



## ACC WAVE

An insole with high wearing comfort. It supports the natural rolling movement of the foot and ensures an equal spreading of the pressure over the whole surface. The cushioning effect of the complete insole relieves muscles, ligaments, joints and the spine. Additionally the insole offers a constant circulation of air inside the shoe which keep your feet cooler and dry.





# TECHNICAL INFORMATION

## BASIC REQUIREMENTS

	EN ISO 20345 SAFETY SHOES	EN ISO 20347 OCCUPATIONAL SHOES
anti-slip property (SRA, SRB or SRC)	SB	OB
energy absorption of toe cap	200 joules	–

## ADDITIONAL REQUIREMENTS

closed heel area   antistatic   energy absorption of heel area	S1	01
same as S1   plus water penetration and water absorption	S2	02
same as S2   plus penetration resistance and profiled sole	S3	03

## REQUIREMENTS | STANDARDS

		SB	S1	S2	S3	OB	01	02	03
<b>BASIC REQUIREMENTS</b>									
toe protection (200 joules)		●	●	●	●				
anti-slip property (SRA, SRB or SRC)		●	●	●	●	●	●	●	●
<b>ADDITIONAL REQUIREMENTS</b>									
energy absorption of heel area	E	○	●	●	●	○	●	●	●
heat insulation of the outsole	HI	○	○	○	○	○	○	○	○
cold insulation of the outsole	CI	○	○	○	○	○	○	○	○
penetration resistance	P	○	○	○	●	○	○	○	●
antistatic property	A	○	●	●	●	○	●	●	●
<b>UPPER</b>									
water penetration and water absorption	WRU	○		●	●	○		●	●
<b>OUTSOLE</b>									
reaction on contact heat	HRO	○	○	○	○	○	○	○	○
fuel resistance	FO	○	●	●	●	○	○	○	○

● fulfills requirements

○ requirement may be fulfilled, but is optional

## SLIP RESISTANCE ACCORDING TO EN ISO 20344-20347:2012

In 2004 the standards EN ISO 20344-20347:2004 have been introduced, supplemented in 2007 by appendix A, concerning requests for slip resistance which are now regulated by the latest standards EN ISO 20344-20347:2012.

For testing the slip resistance, the shoe is fixed in different positions in a measuring device and is drawn over various test floorings. The established value is called slip coefficient.

Tests are performed on various flooring materials such as ceramic tiles with SLS and steel floor with glycerol. Depending on the result of the tested shoe on ceramic tiles or steel floor or even on both, the slip resistance is classified into SRA, SRB or SRC. In standard EN ISO 13287:2007, replacing DIN 4843 part 100 earlier used in Germany, the testing processes are described in detail.

For more information please contact any authorised test and certification institute.



## TECHNOLOGY

### SLIP RESISTANCE EN ISO 20344-20347:2012

<b>SRA</b>	Slip resistance on floors with ceramic tiles with SLS (sodium lauryl ether sulfate solution)
<b>SRB</b>	Slip resistance on steel floor with glycerol
<b>SRC</b>	Slip resistance on floor with ceramic tiles with SLS and on steel floor with glycerol (SRC=SRA+SRB)



# TECHNICAL INFORMATION

## OUR TOE-CAPS



### MCC - MONO COQUE CAP

---

- ▶ Certified according to DIN EN 12568  
Tested outside the shoe (200 joules)
- ▶ Certified according to  
EN ISO 20345:2011  
Tested inside footwear (200 joules)
- ▶ Thermoplastic polyamid, high impact  
resistance and high resilience
- ▶ Shock resistant composite material,  
metal free and approx. 40 % lighter than  
steel



### STEEL TOE-CAP

---

- ▶ Certified according to DIN EN 12568  
Tested outside the shoe (200 joules)
- ▶ Certified according to  
EN ISO 20345:2011  
Tested inside footwear (200 joules)
- ▶ Highly shock resistant and protective





### ALUMINIUM TOE-CAP

---

- ▶ Certified according to  
DIN EN 12568:2010  
Tested outside the shoe (200 joules)
- ▶ Certified according to  
EN ISO 20345:2011  
Tested inside footwear (200 joules)
- ▶ Approx. 40 % lighter than steel,  
improved balance of the shoe

## **A<sup>micro</sup>**

 **A<sup>micro</sup>** is an innovative high-tech material which is especially water-resistant and breathable. It even surpasses hydrophobic leather. It is washable up to 30°C without shrinking and anti-bacterial, which is making it perfect for the use in hygienic sensitive areas. Additionally it can be equipped with various treatments such as silver ions. Due to its special structure it is light and smooth but at the same time very tearproof and resistant.  **A<sup>micro</sup>** replicates leather visually without turning yellow due to direct sunlight.

## **MICROFIBER LINING**

This material is a new breathable high-tech microfiber lining with an absorption capacity of 8 times its weight in water. It offers a maximum comfort and a complete dryness for a perfect foot climate.

- ▶ Absorbs moisture and desorbs it to the outside
- ▶ Breathable - antimicrobial - odor avoiding
- ▶ Temperature regulating
- ▶ Anti-allergy
- ▶ CO<sub>2</sub> neutral production
- ▶ Free of pollutants
- ▶ Odourless and tearproof

## **LINING WITH SILVER IONS**

Garments treated with silver ions offer a special antibacterial effect. Due to this catalytic characteristic germs and bacteria are reduced as well as odors inside the shoe. This lining is breathable feels smooth.

## **LINING WITH SILVER FIBER**

The special, silver fibres are manufactured by using pure silver and a certain thread; these are melted together in a special procedure so that they create a permanent physical connection. This newly formed textile fibre resp. textile yarn is now ready to be combined with all standard yarns and still keeps its functional properties.

These properties and effects are:

- ▶ Antimicrobiological effect = slows down the growth of bacteria which also minimises body-odour
- ▶ Oligodynamic effect = has got an antiseptic effect like copper, gold or silver etc. against certain pathogens
- ▶ Catalytic property = The usually very slow or inhibited reduction of resistant organic-chemical compounds is sped up (e.g. unpleasant odours are eliminated)

## **LINING COMFORTEMP<sup>®</sup>**

Innovative mPCM-Technology developed by Freudenberg (micro-encapsulated Phase Change Material - micro-capsules equalizing temperature, bedded in non-woven materials).

- ▶ When body-temperature increases the micro-capsules change their physical state and become liquid for a cooling effect. The decrease of body temperature makes them turn back to solid for a warming effect.
- ▶ Excellent breathability and ideal transport of humidity provoke a comfortable, dry sensation.
- ▶ No matter if you are at work, doing sports or in your free time Comfortemp<sup>®</sup> provides you with your personal climate-balance.

# INDEX

Art.-No.	Page	Size	Category	Description	Standard	Marking	Insole
1000	16	36 - 46	Safety Shoes	clog, fixed heel strap	CE, EN ISO 20345	SB, A, E, FO, WRU, SRC	-
1001	17	36 - 46	Safety Shoes	clog, fixed heel strap	CE, EN ISO 20345	SB, A, E, FO, WRU, SRC	-
1010	16	36 - 46	Safety Shoes	clog, fixed heel strap	CE, EN ISO 20345	SB, A, E, FO, WRU, SRC	-
1011	17	36 - 46	Safety Shoes	clog, fixed heel strap	CE, EN ISO 20345	SB, A, E, FO, WRU, SRC	-
1023	25	35 - 48	Safety Shoes	low shoe, velcro	CE, EN ISO 20345	S2, SRA	3557
1024	25	35 - 48	Safety Shoes	low shoe, velcro	CE, EN ISO 20345	S2, SRA	3557
1026	26	35 - 48	Safety Shoes	lace-up shoe	CE, EN ISO 20345	S2, SRA	3557
1027	26	35 - 48	Safety Shoes	lace-up shoe	CE, EN ISO 20345	S2, SRA	3557
1028	24	35 - 48	Safety Shoes	slip-on	CE, EN ISO 20345	S2, SRA	3557
1029	24	35 - 48	Safety Shoes	slip-on	CE, EN ISO 20345	S2, SRA	3557
1030	20	35 - 48	Safety Shoes	clog, fixed heel strap	CE, EN ISO 20345	SB, A, E, FO, SRA	3556
1031	22	35 - 48	Safety Shoes	sandal	CE, EN ISO 20345	S1, SRA	3557
1032	24	35 - 48	Safety Shoes	slip-on	CE, EN ISO 20345	S2, SRA	3557
1033	26	35 - 48	Safety Shoes	lace-up shoe	CE, EN ISO 20345	S2, SRA	3557
1035	20	35 - 48	Safety Shoes	clog, fixed heel strap	CE, EN ISO 20345	SB, A, E, FO, SRA	3556
1036	22	35 - 48	Safety Shoes	sandal	CE, EN ISO 20345	S1, SRA	3557
1037	24	35 - 48	Safety Shoes	slip-on	CE, EN ISO 20345	S2, SRA	3557
1038	26	35 - 48	Safety Shoes	lace-up shoe	CE, EN ISO 20345	S2, SRA	3557
1041	20	35 - 48	Safety Shoes	clog, foldable heel strap	CE, EN ISO 20345	SB, A, E, FO, SRA	3556
1042	20	35 - 48	Safety Shoes	clog, foldable heel strap	CE, EN ISO 20345	SB, A, E, FO, SRA	3556
1047	25	35 - 48	Safety Shoes	low shoe, velcro	CE, EN ISO 20345	S2, SRA	3557
1051	23	35 - 48	Safety Shoes	lace-up shoe	CE, EN ISO 20345	S2, SRA	3557
1055	23	35 - 48	Safety Shoes	lace-up shoe	CE, EN ISO 20345	S1, SRA	3557
1056	23	35 - 48	Safety Shoes	lace-up shoe	CE, EN ISO 20345	S1, SRA	3557
1058	23	35 - 48	Safety Shoes	lace-up shoe	CE, EN ISO 20345	S1, SRA	3557
1076	21	35 - 43	Safety Shoes	clog, fixed heel strap	CE, EN ISO 20345	SB, A, E, FO, SRA	3556
1078	21	35 - 43	Safety Shoes	clog, fixed heel strap	CE, EN ISO 20345	SB, A, E, FO, SRA	3556
1080	21	35 - 43	Safety Shoes	clog, fixed heel strap	CE, EN ISO 20345	SB, A, E, FO, SRA	3556
1111	46	36 - 50	Safety Shoes	sandal	CE, EN ISO 20345	S1, SRC	3580
1122	47	36 - 50	Safety Shoes	lace-up shoe	CE, EN ISO 20345	S1, SRC	3580
1272	73	36 - 47	Safety Shoes	lace-up shoe	CE, EN ISO 20345	S1, SRA*	3553
1275	72	36 - 47	Safety Shoes	sandal, velcro	CE, EN ISO 20345	S1, SRA*	3553
1361	74	36 - 47	Safety Shoes	lace-up shoe	CE, EN ISO 20345	S2, SRA*	3553
1362	74	36 - 47	Safety Shoes	lace-up shoe	CE, EN ISO 20345	S2, SRA*	3553
1366	73	36 - 47	Safety Shoes	lace-up shoe	CE, EN ISO 20345	S1, SRA*	3553
1378	72	36 - 47	Safety Shoes	sandal, velcro	CE, EN ISO 20345	S1, SRA*	3553
1392	74	36 - 47	Safety Shoes	slip-on	CE, EN ISO 20345	S2, SRA*	3553
1500	17	36 - 46	Safety Shoes	low shoe	CE, EN ISO 20345	S2, SRC	-
1600	79	36 - 48	Safety Shoes	lace-up shoe	CE, EN ISO 20345	S2, SRC	-
1602	79	36 - 48	Safety Shoes	lace-up shoe	CE, EN ISO 20345	S2, SRC	-
1610	80	36 - 48	Safety Shoes	lace-up shoe	CE, EN ISO 20345	S3, SRC	-
1630	79	36 - 48	Safety Shoes	boot	CE, EN ISO 20345	S2, SRC	-
1632	79	36 - 48	Safety Shoes	boot	CE, EN ISO 20345	S2, SRC	-
1635	81	36 - 48	Safety Shoes	boot	CE, EN ISO 20345	S3, SRC	-
1645	81	36 - 48	Safety Shoes	boot, velcro	CE, EN ISO 20345	S3, SRC	-
1655	81	36 - 48	Safety Shoes	boot, velcro	CE, EN ISO 20345	S3, SRC	-





Art.-No.	Page	Size	Category	Description	Standard	Marking	Insole
1700	38	35 - 48	Safety Shoes	lace-up shoe	CE, EN ISO 20345	S1, SRC	3576
1701	38	35 - 48	Safety Shoes	lace-up shoe	CE, EN ISO 20345	S1, SRC	3576
1711	38	35 - 48	Safety Shoes	lace-up shoe	CE, EN ISO 20345	S1, SRC	3576
1720	34	35 - 48	Safety Shoes	lace-up shoe	CE, EN ISO 20345	S1, SRC	3576
1721	34	35 - 48	Safety Shoes	lace-up shoe	CE, EN ISO 20345	S1, SRC	3576
1730	34	35 - 48	Safety Shoes	lace-up shoe	CE, EN ISO 20345	S1, SRC	3576
1731	34	35 - 48	Safety Shoes	lace-up shoe	CE, EN ISO 20345	S1, SRC	3576
1740	30	35 - 48	Safety Shoes	slip-on	CE, EN ISO 20345	S2, SRC	3576
1741	30	35 - 48	Safety Shoes	slip-on	CE, EN ISO 20345	S2, SRC	3576
1750	39	35 - 48	Safety Shoes	lace-up shoe	CE, EN ISO 20345	S2, SRC	3576
1751	39	35 - 48	Safety Shoes	lace-up shoe	CE, EN ISO 20345	S2, SRC	3576
1752	38	35 - 48	Safety Shoes	lace-up shoe	CE, EN ISO 20345	S2, SRC	3576
1760	32	35 - 48	Safety Shoes	lace-up shoe	CE, EN ISO 20345	S1, SRC	3576
1761	32	35 - 48	Safety Shoes	lace-up shoe	CE, EN ISO 20345	S1, SRC	3576
1762	33	35 - 48	Safety Shoes	lace-up shoe	CE, EN ISO 20345	S1, SRC	3576
1763	33	35 - 48	Safety Shoes	lace-up shoe	CE, EN ISO 20345	S1, SRC	3576
1764	33	35 - 48	Safety Shoes	lace-up shoe	CE, EN ISO 20345	S1, SRC	3576
1770	35	35 - 48	Safety Shoes	lace-up shoe	CE, EN ISO 20345	S2, SRC	3576
1771	35	35 - 48	Safety Shoes	lace-up shoe	CE, EN ISO 20345	S2, SRC	3576
1780	36	35 - 48	Safety Shoes	lace-up shoe	CE, EN ISO 20345	S2, SRC	3576
1781	36	35 - 48	Safety Shoes	lace-up shoe	CE, EN ISO 20345	S2, SRC	3576
1782	37	35 - 48	Safety Shoes	lace-up shoe	CE, EN ISO 20345	S2, SRC	3576
1783	37	35 - 48	Safety Shoes	lace-up shoe	CE, EN ISO 20345	S2, SRC	3576
1784	37	35 - 48	Safety Shoes	lace-up shoe	CE, EN ISO 20345	S2, SRC	3576
1785	37	35 - 48	Safety Shoes	lace-up shoe	CE, EN ISO 20345	S2, SRC	3576
1790	31	35 - 48	Safety Shoes	boot	CE, EN ISO 20345	S2, SRC	3576
1792	31	35 - 48	Safety Shoes	boot	CE, EN ISO 20345	S2, SRC	3576
1795	30	35 - 48	Safety Shoes	sandal	CE, EN ISO 20345	S1, SRC	3576
1796	30	35 - 48	Safety Shoes	sandal	CE, EN ISO 20345	S1, SRC	3576
2120	42	36 - 52	Safety Shoes	clog, fixed heel strap	CE, EN ISO 20345	SB, A, E, WRU, SRC	3582
2125	42	36 - 52	Safety Shoes	clog, fixed heel strap	CE, EN ISO 20345	SB, A, E, WRU, SRC	3582
2130	44	36 - 52	Safety Shoes	slip-on	CE, EN ISO 20345	S2, SRC	3580
2131	43	36 - 50	Safety Shoes	lace-up shoe	CE, EN ISO 20345	S2, SRC	3580
2135	44	36 - 52	Safety Shoes	slip-on	CE, EN ISO 20345	S2, SRC	3580
2136	43	36 - 50	Safety Shoes	lace-up shoe	CE, EN ISO 20345	S2, SRC	3580
2140	43	36 - 48	Safety Shoes	low shoe, velcro	CE, EN ISO 20345	S2, SRC	3580
2145	47	36 - 50	Safety Shoes	lace-up shoe	CE, EN ISO 20345	S1, SRC	3580
2156	47	36 - 50	Safety Shoes	lace-up shoe	CE, EN ISO 20345	S2, SRC	3580
2168	49	36 - 50	Safety Shoes	boot	CE, EN ISO 20345	S2, SRC	3580
2169	49	36 - 50	Safety Shoes	boot	CE, EN ISO 20345	S2, SRC	3580
2171	45	36 - 50	Safety Shoes	boot	CE, EN ISO 20345	S2, SRC	3580
2172	45	36 - 50	Safety Shoes	boot	CE, EN ISO 20345	S2, SRC	3580
2177	48	36 - 48	Safety Shoes	lace-up shoe	CE, EN ISO 20345	S2, SRC	3580
2178	48	36 - 48	Safety Shoes	boot	CE, EN ISO 20345	S2, SRC	3580
2189	46	36 - 52	Safety Shoes	sandal	CE, EN ISO 20345	S1, SRC	3580
2230	80	36 - 48	Safety Shoes	low shoe	CE, EN ISO 20345	S3, SRC	-
2232	80	36 - 48	Safety Shoes	low shoe	CE, EN ISO 20345	S3, SRC	-
2256	53	36 - 52	Safety Shoes	lace-up shoe	CE, EN ISO 20345	S3, SRC	3580

**INDEX**

Art.-No.	Page	Size	Category	Description	Standard	Marking	Insole
2268	53	36 - 52	Safety Shoes	boot	CE, EN ISO 20345	S3, SRC	3580
2280	45	36 - 48	Safety Shoes	boot	CE, EN ISO 20345	S3, SRC	3580
2281	45	36 - 48	Safety Shoes	boot	CE, EN ISO 20345	S3, SRC	3580
2289	52	36 - 48	Safety Shoes	sandal	CE, EN ISO 20345	S1P, SRC	3580
2290	50	36 - 48	Safety Shoes	lace-up shoe	CE, EN ISO 20345	S1P, SRC	3580
2292	50	36 - 48	Safety Shoes	lace-up shoe	CE, EN ISO 20345	S1P, SRC	3580
2615	42	36 - 50	Safety Shoes	sandal, velcro	CE, EN ISO 20345	S1, SRC	3580
2616	42	36 - 50	Safety Shoes	sandal, velcro	CE, EN ISO 20345	S1, SRC	3580
2626	43	36 - 52	Safety Shoes	lace-up shoe	CE, EN ISO 20345	S1, SRC	3580
3553	82	36 - 47	Insole	acc Wave			-
3556	82	35 - 48	Insole	acc Wave			-
3557	82	35 - 48	Insole	acc Wave			-
3576	82	35 - 48	Insole	acc Wave			-
3577	82	36 - 48	Insole	acc Wave			-
3578	82	35 - 47	Insole	acc Wave			-
3579	82	36 - 48	Insole	acc Wave			-
3580	82	36 - 52	Insole	acc Wave			-
3582	82	36 - 52	Insole	acc Wave			-
4500	63	36 - 48	Safety Shoes	lace-up shoe	CE, EN ISO 20345	S2, SRC	3577
4501	63	36 - 48	Safety Shoes	lace-up shoe	CE, EN ISO 20345	S2, SRC	3577
4502	63	36 - 48	Safety Shoes	lace-up shoe	CE, EN ISO 20345	S2, SRC	3577
4504	63	36 - 48	Safety Shoes	lace-up shoe	CE, EN ISO 20345	S2, SRC	3577
4510	62	36 - 48	Safety Shoes	lace-up shoe	CE, EN ISO 20345	S1, SRC	3577
4511	62	36 - 48	Safety Shoes	lace-up shoe	CE, EN ISO 20345	S1, SRC	3577
4512	62	36 - 48	Safety Shoes	lace-up shoe	CE, EN ISO 20345	S1, SRC	3577
4514	62	36 - 48	Safety Shoes	lace-up shoe	CE, EN ISO 20345	S1, SRC	3577
4521	57	36 - 48	Safety Shoes	lace-up shoe	CE, EN ISO 20345	S1, SRC	3577
4523	57	36 - 48	Safety Shoes	lace-up shoe	CE, EN ISO 20345	S1, SRC	3577
4541	57	36 - 48	Safety Shoes	sandal	CE, EN ISO 20345	S1, SRC	3577
4555	56	36 - 48	Safety Shoes	clog, fixed heel strap	CE, EN ISO 20345	SB, A, E, FO, SRC	3579
4556	56	36 - 48	Safety Shoes	clog, fixed heel strap	CE, EN ISO 20345	SB, A, E, FO, SRC	3579
4570	60	36 - 48	Safety Shoes	lace-up shoe	CE, EN ISO 20345	S1, SRC	3577
4571	60	36 - 48	Safety Shoes	lace-up shoe	CE, EN ISO 20345	S1, SRC	3577
4572	60	36 - 48	Safety Shoes	lace-up shoe	CE, EN ISO 20345	S1, SRC	3577
4573	61	36 - 48	Safety Shoes	lace-up shoe	CE, EN ISO 20345	S2, SRC	3577
4574	61	36 - 48	Safety Shoes	lace-up shoe	CE, EN ISO 20345	S2, SRC	3577
4580	58	36 - 48	Safety Shoes	lace-up shoe	CE, EN ISO 20345	S1, SRC	3577
4581	58	36 - 48	Safety Shoes	lace-up shoe	CE, EN ISO 20345	S1, SRC	3577
4582	59	36 - 48	Safety Shoes	lace-up shoe	CE, EN ISO 20345	S1, SRC	3577
4584	59	36 - 48	Safety Shoes	lace-up shoe	CE, EN ISO 20345	S1, SRC	3577
4621	67	36 - 48	Safety Shoes	lace-up shoe	CE, EN ISO 20345	S2, SRC	3577
4625	66	36 - 48	Safety Shoes	lace-up shoe	CE, EN ISO 20345	S2, SRC	3577
4633	66	36 - 48	Safety Shoes	lace-up shoe	CE, EN ISO 20345	S2, SRC	3577
4651	67	36 - 48	Safety Shoes	boot	CE, EN ISO 20345	S2, SRC	3577
4701	69	35 - 47	Safety Shoes	lace-up shoe	CE, EN ISO 20345	S2, SRC	3578
4711	68	35 - 47	Safety Shoes	lace-up shoe	CE, EN ISO 20345	S1, SRC	3578
4721	68	35 - 47	Safety Shoes	lace-up shoe	CE, EN ISO 20345	S1, SRC	3578



Art.-No.	Page	Size	Category	Description	Standard	Marking	Insole
4875	65	36 - 48	Safety Shoes	lace-up shoe	CE, EN ISO 20345	S3, SRC	3577
4883	65	36 - 48	Safety Shoes	lace-up shoe	CE, EN ISO 20345	S1P, SRC	3577
31000	16	36 - 46	Safety Shoes	clog, fixed heel strap	CE, EN ISO 20345	SB, A, E, FO, WRU, SRC	-
31001	17	36 - 46	Safety Shoes	clog, fixed heel strap	CE, EN ISO 20345	SB, A, E, FO, WRU, SRC	-
31010	16	36 - 46	Safety Shoes	clog, fixed heel strap	CE, EN ISO 20345	SB, A, E, FO, WRU, SRC	-
31011	17	36 - 46	Safety Shoes	clog, fixed heel strap	CE, EN ISO 20345	SB, A, E, FO, WRU, SRC	-
31023	25	35 - 48	Safety Shoes	low shoe, velcro	CE, EN ISO 20345	S2, SRA	3557
31024	25	35 - 48	Safety Shoes	low shoe, velcro	CE, EN ISO 20345	S2, SRA	3557
31026	26	35 - 48	Safety Shoes	lace-up shoe	CE, EN ISO 20345	S2, SRA	3557
31027	26	35 - 48	Safety Shoes	lace-up shoe	CE, EN ISO 20345	S2, SRA	3557
31028	24	35 - 48	Safety Shoes	slip-on	CE, EN ISO 20345	S2, SRA	3557
31029	24	35 - 48	Safety Shoes	slip-on	CE, EN ISO 20345	S2, SRA	3557
31030	20	35 - 48	Safety Shoes	clog, fixed heel strap	CE, EN ISO 20345	SB, A, E, FO, SRA	3556
31031	22	35 - 48	Safety Shoes	sandal	CE, EN ISO 20345	S1, SRA	3557
31032	24	35 - 48	Safety Shoes	slip-on	CE, EN ISO 20345	S2, SRA	3557
31033	26	35 - 48	Safety Shoes	lace-up shoe	CE, EN ISO 20345	S2, SRA	3557
31035	20	35 - 48	Safety Shoes	clog, fixed heel strap	CE, EN ISO 20345	SB, A, E, FO, SRA	3556
31036	22	35 - 48	Safety Shoes	sandal	CE, EN ISO 20345	S1, SRA	3557
31037	24	35 - 48	Safety Shoes	slip-on	CE, EN ISO 20345	S2, SRA	3557
31038	26	35 - 48	Safety Shoes	lace-up shoe	CE, EN ISO 20345	S2, SRA	3557
31041	20	35 - 48	Safety Shoes	clog, foldable heel strap	CE, EN ISO 20345	SB, A, E, FO, SRA	3556
31042	20	35 - 48	Safety Shoes	clog, foldable heel strap	CE, EN ISO 20345	SB, A, E, FO, SRA	3556
31047	25	35 - 48	Safety Shoes	low shoe, velcro	CE, EN ISO 20345	S2, SRA	3557
31051	23	35 - 48	Safety Shoes	lace-up shoe	CE, EN ISO 20345	S2, SRA	3557
31055	23	35 - 48	Safety Shoes	lace-up shoe	CE, EN ISO 20345	S1, SRA	3557
31056	23	35 - 48	Safety Shoes	lace-up shoe	CE, EN ISO 20345	S1, SRA	3557
31058	23	35 - 48	Safety Shoes	lace-up shoe	CE, EN ISO 20345	S1, SRA	3557
31076	21	35 - 43	Safety Shoes	clog, fixed heel strap	CE, EN ISO 20345	SB, A, E, FO, SRA	3556
31078	21	35 - 43	Safety Shoes	clog, fixed heel strap	CE, EN ISO 20345	SB, A, E, FO, SRA	3556
31080	21	35 - 43	Safety Shoes	clog, fixed heel strap	CE, EN ISO 20345	SB, A, E, FO, SRA	3556
31361	74	36 - 47	Safety Shoes	lace-up shoe	CE, EN ISO 20345	S2, SRA*	3553
31362	74	36 - 47	Safety Shoes	lace-up shoe	CE, EN ISO 20345	S2, SRA*	3553
31366	73	36 - 47	Safety Shoes	lace-up shoe	CE, EN ISO 20345	S1, SRA*	3553
31378	72	36 - 47	Safety Shoes	sandal, velcro	CE, EN ISO 20345	S1, SRA*	3553
31392	74	36 - 47	Safety Shoes	slip-on	CE, EN ISO 20345	S2, SRA*	3553
31473	75	36 - 47	Safety Shoes	lace-up shoe	CE, EN ISO 20345	S1P, SRA*	3553
31474	75	36 - 47	Safety Shoes	lace-up shoe	CE, EN ISO 20345	S3, SRA*	3553
31475	75	36 - 47	Safety Shoes	boot	CE, EN ISO 20345	S3, SRA*	3553
31700	38	35 - 48	Safety Shoes	lace-up shoe	CE, EN ISO 20345	S1, SRC	3576
31701	38	35 - 48	Safety Shoes	lace-up shoe	CE, EN ISO 20345	S1, SRC	3576
31711	38	35 - 48	Safety Shoes	lace-up shoe	CE, EN ISO 20345	S1, SRC	3576
31720	34	35 - 48	Safety Shoes	lace-up shoe	CE, EN ISO 20345	S1, SRC	3576
31721	34	35 - 48	Safety Shoes	lace-up shoe	CE, EN ISO 20345	S1, SRC	3576
31730	34	35 - 48	Safety Shoes	lace-up shoe	CE, EN ISO 20345	S1, SRC	3576
31731	34	35 - 48	Safety Shoes	lace-up shoe	CE, EN ISO 20345	S1, SRC	3576
31740	30	35 - 48	Safety Shoes	slip-on	CE, EN ISO 20345	S2, SRC	3576
31741	30	35 - 48	Safety Shoes	slip-on	CE, EN ISO 20345	S2, SRC	3576

**INDEX**

Art.-No.	Page	Size	Category	Description	Standard	Marking	Insole
31750	39	35 - 48	Safety Shoes	lace-up shoe	CE, EN ISO 20345	S2, SRC	3576
31751	39	35 - 48	Safety Shoes	lace-up shoe	CE, EN ISO 20345	S2, SRC	3576
31752	38	35 - 48	Safety Shoes	lace-up shoe	CE, EN ISO 20345	S2, SRC	3576
31753	39	35 - 48	Safety Shoes	lace-up shoe	CE, EN ISO 20345	S2, SRC	3576
31760	32	35 - 48	Safety Shoes	lace-up shoe	CE, EN ISO 20345	S1, SRC	3576
31761	32	35 - 48	Safety Shoes	lace-up shoe	CE, EN ISO 20345	S1, SRC	3576
31762	33	35 - 48	Safety Shoes	lace-up shoe	CE, EN ISO 20345	S1, SRC	3576
31763	33	35 - 48	Safety Shoes	lace-up shoe	CE, EN ISO 20345	S1, SRC	3576
31764	33	35 - 48	Safety Shoes	lace-up shoe	CE, EN ISO 20345	S1, SRC	3576
31770	35	35 - 48	Safety Shoes	lace-up shoe	CE, EN ISO 20345	S2, SRC	3576
31771	35	35 - 48	Safety Shoes	lace-up shoe	CE, EN ISO 20345	S2, SRC	3576
31780	36	35 - 48	Safety Shoes	lace-up shoe	CE, EN ISO 20345	S2, SRC	3576
31781	36	35 - 48	Safety Shoes	lace-up shoe	CE, EN ISO 20345	S2, SRC	3576
31782	37	35 - 48	Safety Shoes	lace-up shoe	CE, EN ISO 20345	S2, SRC	3576
31783	37	35 - 48	Safety Shoes	lace-up shoe	CE, EN ISO 20345	S2, SRC	3576
31784	37	35 - 48	Safety Shoes	lace-up shoe	CE, EN ISO 20345	S2, SRC	3576
31785	37	35 - 48	Safety Shoes	lace-up shoe	CE, EN ISO 20345	S2, SRC	3576
31790	31	35 - 48	Safety Shoes	boot	CE, EN ISO 20345	S2, SRC	3576
31792	31	35 - 48	Safety Shoes	boot	CE, EN ISO 20345	S2, SRC	3576
31793	39	35 - 48	Safety Shoes	lace-up shoe	CE, EN ISO 20345	S3, SRC	3576
31795	30	35 - 48	Safety Shoes	sandal	CE, EN ISO 20345	S1, SRC	3576
31796	30	35 - 48	Safety Shoes	sandal	CE, EN ISO 20345	S1, SRC	3576
31853	27	35 - 48	Safety Shoes	boot	CE, EN ISO 20345	S3, SRA	3557
31874	27	35 - 48	Safety Shoes	lace-up shoe	CE, EN ISO 20345	S3, SRA	3557
32120	42	36 - 52	Safety Shoes	clog, fixed heel strap	CE, EN ISO 20345	SB, A, E, WRU, SRC	3582
32125	42	36 - 52	Safety Shoes	clog, fixed heel strap	CE, EN ISO 20345	SB, A, E, WRU, SRC	3582
32130	44	36 - 52	Safety Shoes	slip-on	CE, EN ISO 20345	S2, SRC	3580
32131	43	36 - 50	Safety Shoes	lace-up shoe	CE, EN ISO 20345	S2, SRC	3580
32135	44	36 - 52	Safety Shoes	slip-on	CE, EN ISO 20345	S2, SRC	3580
32136	43	36 - 50	Safety Shoes	lace-up shoe	CE, EN ISO 20345	S2, SRC	3580
32140	43	36 - 48	Safety Shoes	low shoe, velcro	CE, EN ISO 20345	S2, SRC	3580
32145	47	36 - 50	Safety Shoes	lace-up shoe	CE, EN ISO 20345	S1, SRC	3580
32147	47	36 - 50	Safety Shoes	lace-up shoe	CE, EN ISO 20345	S1, SRC	3580
32156	47	36 - 50	Safety Shoes	lace-up shoe	CE, EN ISO 20345	S2, SRC	3580
32168	49	36 - 50	Safety Shoes	boot	CE, EN ISO 20345	S2, SRC	3580
32169	49	36 - 50	Safety Shoes	boot	CE, EN ISO 20345	S2, SRC	3580
32171	45	36 - 50	Safety Shoes	boot	CE, EN ISO 20345	S2, SRC	3580
32172	45	36 - 50	Safety Shoes	boot	CE, EN ISO 20345	S2, SRC	3580
32177	48	36 - 48	Safety Shoes	lace-up shoe	CE, EN ISO 20345	S2, SRC	3580
32178	48	36 - 48	Safety Shoes	boot	CE, EN ISO 20345	S2, SRC	3580
32189	46	36 - 52	Safety Shoes	sandal	CE, EN ISO 20345	S1, SRC	3580
32243	52	36 - 48	Safety Shoes	lace-up shoe	CE, EN ISO 20345	S1P, SRC	3580
32247	52	36 - 48	Safety Shoes	lace-up shoe	CE, EN ISO 20345	S1P, SRC	3580
34822	64	36 - 48	Safety Shoes	lace-up shoe	CE, EN ISO 20345	S1P, SRC	3577
34875	65	36 - 48	Safety Shoes	lace-up shoe	CE, EN ISO 20345	S3, SRC	3577
34883	65	36 - 48	Safety Shoes	lace-up shoe	CE, EN ISO 20345	S1P, SRC	3577



Art.-No.	Page	Size	Category	Description	Standard	Marking	Insole
32254	53	36 - 48	Safety Shoes	lace-up shoe	CE, EN ISO 20345	S3, SRC	3580
32256	53	36 - 52	Safety Shoes	lace-up shoe	CE, EN ISO 20345	S3, SRC	3580
32268	53	36 - 52	Safety Shoes	boot	CE, EN ISO 20345	S3, SRC	3580
32270	53	36 - 48	Safety Shoes	boot	CE, EN ISO 20345	S3, SRC	3580
32280	45	36 - 48	Safety Shoes	boot	CE, EN ISO 20345	S3, SRC	3580
32281	45	36 - 48	Safety Shoes	boot	CE, EN ISO 20345	S3, SRC	3580
32289	52	36 - 48	Safety Shoes	sandal	CE, EN ISO 20345	S1P, SRC	3580
32290	50	36 - 48	Safety Shoes	lace-up shoe	CE, EN ISO 20345	S1P, SRC	3580
32291	51	36 - 48	Safety Shoes	lace-up shoe	CE, EN ISO 20345	S1P, SRC	3580
32292	50	36 - 48	Safety Shoes	lace-up shoe	CE, EN ISO 20345	S1P, SRC	3580
32615	42	36 - 50	Safety Shoes	sandal	CE, EN ISO 20345	S1, SRC	3580
33230	77	36 - 48	Safety Shoes	lace-up shoe	CE, EN ISO 20345	S2, SRA	-
33240	77	36 - 48	Safety Shoes	lace-up shoe	CE, EN ISO 20345	S2, SRA	-
34222	67	36 - 48	Safety Shoes	lace-up shoe	CE, EN ISO 20345	S3, SRC	3577
34252	67	36 - 48	Safety Shoes	boot	CE, EN ISO 20345	S3, SRC	3577
34500	63	36 - 48	Safety Shoes	lace-up shoe	CE, EN ISO 20345	S2, SRC	3577
34501	63	36 - 48	Safety Shoes	lace-up shoe	CE, EN ISO 20345	S2, SRC	3577
34502	63	36 - 48	Safety Shoes	lace-up shoe	CE, EN ISO 20345	S2, SRC	3577
34504	63	36 - 48	Safety Shoes	lace-up shoe	CE, EN ISO 20345	S2, SRC	3577
34510	62	36 - 48	Safety Shoes	lace-up shoe	CE, EN ISO 20345	S1, SRC	3577
34511	62	36 - 48	Safety Shoes	lace-up shoe	CE, EN ISO 20345	S1, SRC	3577
34512	62	36 - 48	Safety Shoes	lace-up shoe	CE, EN ISO 20345	S1, SRC	3577
34514	62	36 - 48	Safety Shoes	lace-up shoe	CE, EN ISO 20345	S1, SRC	3577
34521	57	36 - 48	Safety Shoes	lace-up shoe	CE, EN ISO 20345	S1, SRC	3577
34523	57	36 - 48	Safety Shoes	lace-up shoe	CE, EN ISO 20345	S1, SRC	3577
34541	57	36 - 48	Safety Shoes	sandal	CE, EN ISO 20345	S1, SRC	3577
34555	56	36 - 48	Safety Shoes	clog, fixed heel strap	CE, EN ISO 20345	SB, A, E, FO, SRC	3579
34556	56	36 - 48	Safety Shoes	clog, fixed heel strap	CE, EN ISO 20345	SB, A, E, FO, SRC	3579
34570	60	36 - 48	Safety Shoes	lace-up shoe	CE, EN ISO 20345	S1, SRC	3577
34571	60	36 - 48	Safety Shoes	lace-up shoe	CE, EN ISO 20345	S1, SRC	3577
34572	60	36 - 48	Safety Shoes	lace-up shoe	CE, EN ISO 20345	S1, SRC	3577
34573	61	36 - 48	Safety Shoes	lace-up shoe	CE, EN ISO 20345	S2, SRC	3577
34574	61	36 - 48	Safety Shoes	lace-up shoe	CE, EN ISO 20345	S2, SRC	3577
34580	58	36 - 48	Safety Shoes	lace-up shoe	CE, EN ISO 20345	S1, SRC	3577
34581	58	36 - 48	Safety Shoes	lace-up shoe	CE, EN ISO 20345	S1, SRC	3577
34582	59	36 - 48	Safety Shoes	lace-up shoe	CE, EN ISO 20345	S1, SRC	3577
34584	59	36 - 48	Safety Shoes	lace-up shoe	CE, EN ISO 20345	S1, SRC	3577
34621	67	36 - 48	Safety Shoes	lace-up shoe	CE, EN ISO 20345	S2, SRC	3577
34625	66	36 - 48	Safety Shoes	lace-up shoe	CE, EN ISO 20345	S2, SRC	3577
34633	66	36 - 48	Safety Shoes	lace-up shoe	CE, EN ISO 20345	S2, SRC	3577
34651	67	36 - 48	Safety Shoes	boot	CE, EN ISO 20345	S2, SRC	3577
34701	69	35 - 47	Safety Shoes	lace-up shoe	CE, EN ISO 20345	S2, SRC	3578
34711	68	35 - 47	Safety Shoes	lace-up shoe	CE, EN ISO 20345	S1, SRC	3578
34721	68	35 - 47	Safety Shoes	lace-up shoe	CE, EN ISO 20345	S1, SRC	3578
34803	65	36 - 48	Safety Shoes	lace-up shoe	CE, EN ISO 20345	S3, SRC	3577
34813	65	36 - 48	Safety Shoes	lace-up shoe	CE, EN ISO 20345	S1P, SRC	3577







Your ABEBA distributor:





# Icons



STEEL TOE-CAP



COMPOSITE TOE-CAP



ALUMINIUM TOE-CAP



METAL FREE



SUITABLE FOR KITCHENS



REPLACEABLE INSOLE



BREATHABLE TEXTILE



ESD



WASHABLE AT 30° C



PENETRATION RESISTANCE



HACCP-COMPLIANT



IDENTIFICATION ACCORDING TO STANDARD



# Size comparison table

D Mondopoint RS mm	D/ F paris point	GB english size	USA	
			women	men
210	34	2	3,5	2,5
217	35	2,5	4,0	3,0
225	36	3,5	5,0	4,0
232	37	4	6,0	4,5
240	38	5	6,5	5,5
247	39	6	7,5	6,0
255	40	6,5	8,0	7,0
262	41	7,5	9,0	7,5
270	42	8	9,5	8,5
277	43	9	10,5	9,5
285	44	9,5	11,5	10,0
292	45	10,5	12,0	11,0
300	46	11,5	13,0	11,5
307	47	12	13,5	12,5
315	48	13	14,5	13,0