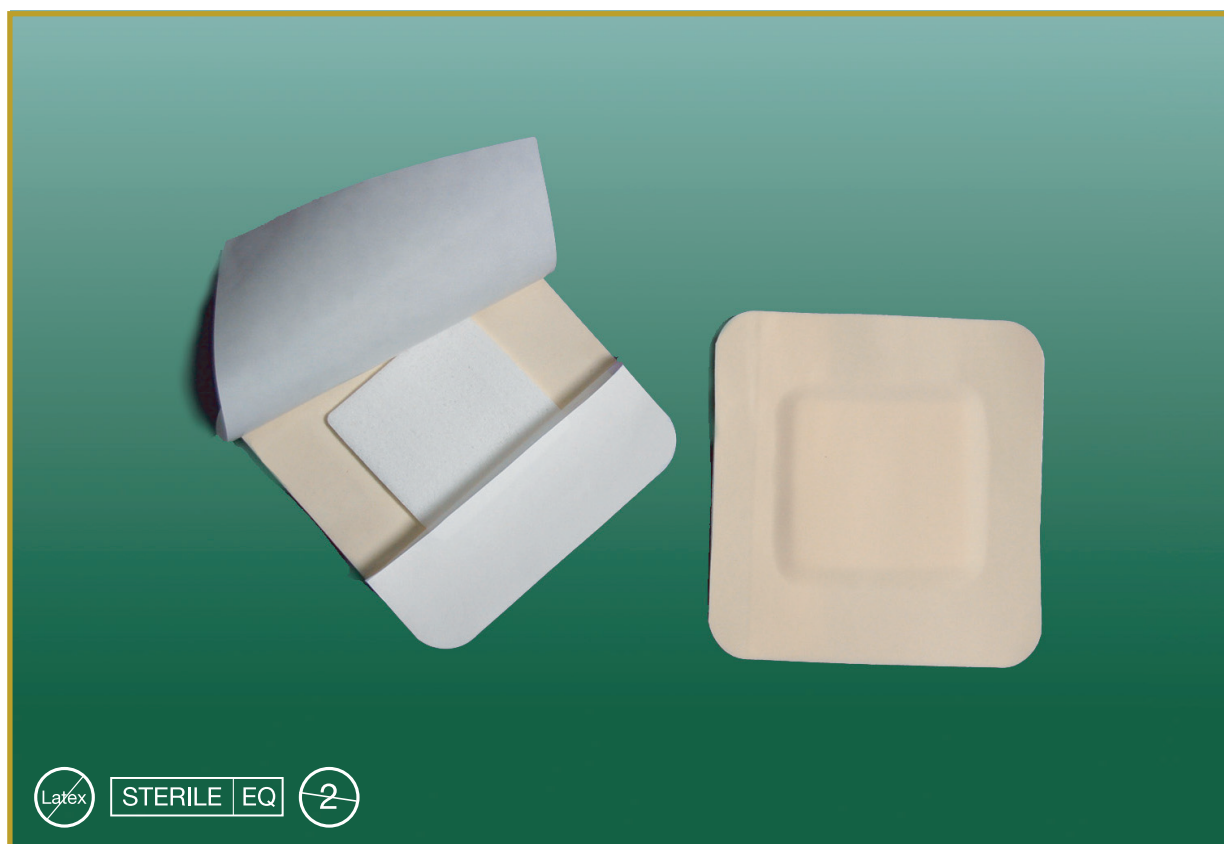


Adhesive Foam Dressing



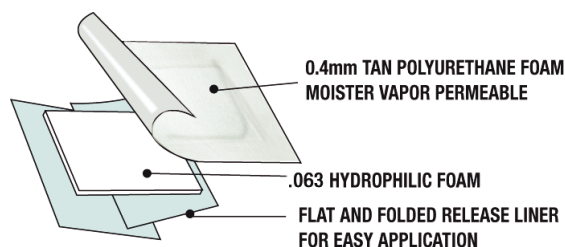
This high-density foam dressing is covered by a layer of comfortable, self-adhesive, water-resistant polyurethane foam. This foam island dressing's waterproof, polyurethane backing helps maintain an optimally moist wound environment, helps prevent strike-through, and aids in the prevention of bacterial contamination of the wound. The moisture vapor transmission rate adjusts depending on the fluid level in the wound. Foam pad has micropores for low adherence to wound surface, yet has a higher fluid-handling capacity than other brands. Foam island gently expands as it absorbs, keeping the dressing in contact with the wound surface for improved fluid handling.

Key Features:

- Excellent exudate absorption
- Extended wear times
- Semi-occlusive - reduces risk of maceration or drying out
- Provides a moist environment for optimal wound healing
- Encourages autolytic debridement
- Easy to apply
- Perfect for awkward wound sites
- Comfortable

Compares to:

- Lyofoam A™ - ConvaTec
- Tielle™ - J&J
- Polymem Adhesive® - Ferris
- Allevyn Adhesive™ - Smith and Nephew
- Optifoam Adhesive™ - Medline
- DermaLevin™ - DermaRite



LATEX FREE • DEHP-FREE • HYPOALLERGENIC

Size	Package	HCPCS	Product #
4"x4" w/ 2"x2" Pad	10/Box	A6212	WS7410-FA
6"x6" w/ 4.25"x4.25" Pad	10/Box	A6214	WS7610-FA



Tel: 01 2018072/3
Fax: 01 2018074

E-Mail:
sales@patcoakleymedical.ie

www.patcoakleymedical.ie

AVAILABLE AT:

PAT COAKLEY MEDICAL LTD
Units E3 & E4 Network Enterprise
Park
Kilcoole
Co Wicklow
IRELAND