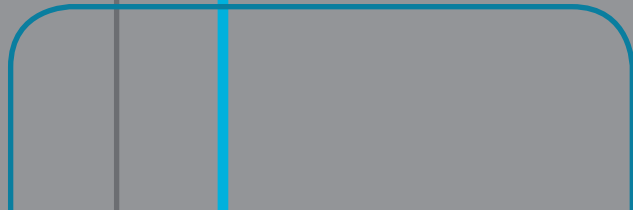
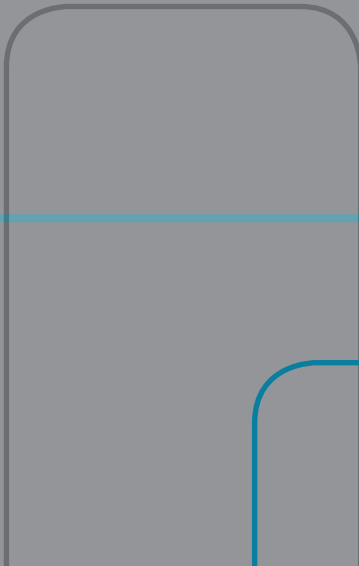
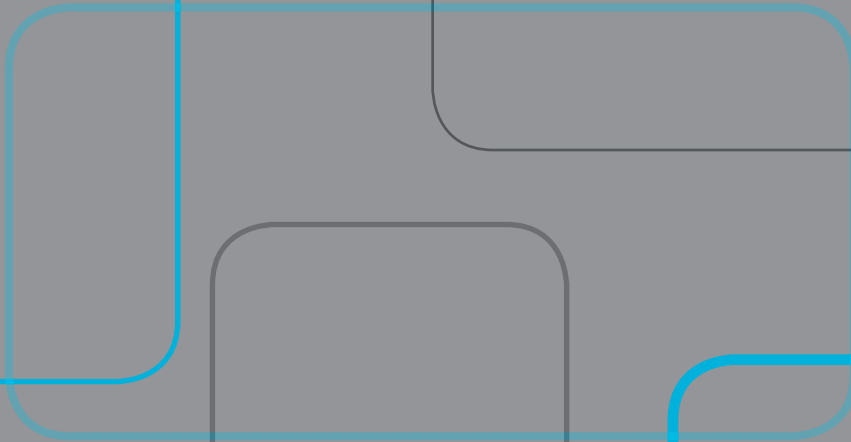
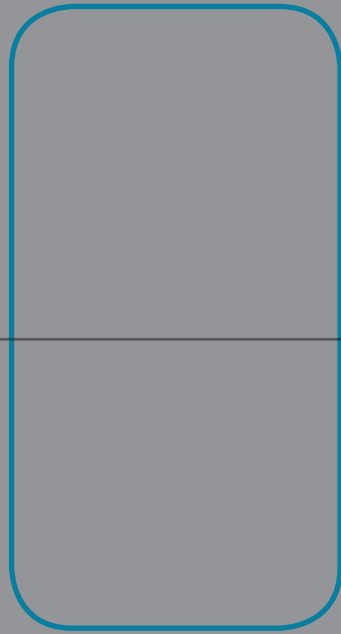
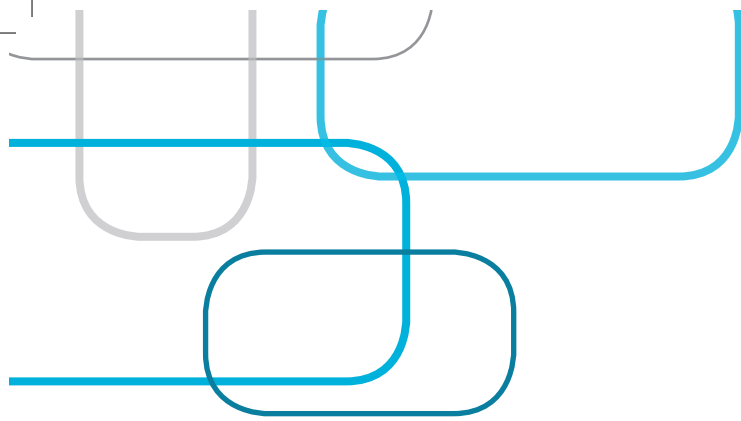


Stainless Steel Dins





Stainless Steel Dins

Our stainless steel range of DINS are a quality product available as a Flat Base Basket with Perforated Sides or Full Wire Mesh Baskets. The Flat Base with Perforated Sides Basket prevents finer, delicate instruments from slipping through. Both versions have 2 inner mounted drop down handles.

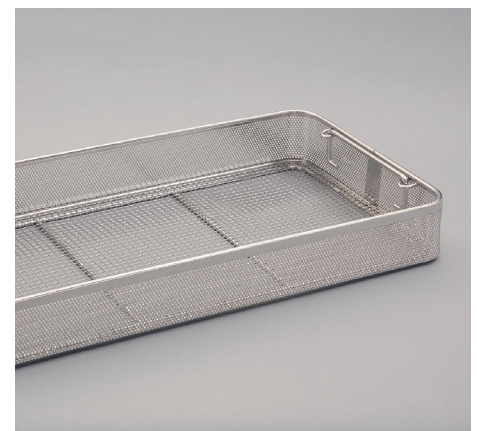
- > Manufacture to DIN 58952
- > Electro-Polished
- > Spot-welded at cross points
- > 304 Stainless Steel
- > Burr Free
- > Cross-hatched flat mesh base

Flat Base Baskets with Perforated Sides suffix *PER

Full Wire Mesh Baskets suffix *MESH

Please add the suffix *PER or *MESH when you place your order to identify the tray you require

Ref	Dimensions (LxWxD mm)	Ref	Dimensions (LxWxD mm)
1001	240 x 250 x 60	1004	410 x 250 x 60
1002	240 x 250 x 75	1005	410 x 250 x 75
1003	240 x 250 x 100	1006	410 x 250 x 100
1007	480 x 250 x 60	1010	540 x 250 x 60
1008	480 x 250 x 75	1011	540 x 250 x 75
1009	480 x 250 x 100	1012	540 x 250 x 100



Cape Warwick Limited

Shaw House, Shaw Lane, Kings Bromley, Staffordshire, DE13 7JQ
 Tel: (01543) 472443 Fax: (01543) 472461
 www.cape-warwick.co.uk enquiries@cape-warwick.co.uk
 Company Registration No.2621564 VAT Registration No.555 2464 37

