

ABEBA®



Uni6

Experience the future!

We are convinced that walking comfort, safety, high flexibility, perfect side support and cushion as well as a healthy foot climate don't have to be a luxury anymore. These characteristics were the central elements in developing an entirely new range of ESD protective occupational and safety shoes for ABEBA.

„Uni6“ combines a dynamic design and innovative technology to a perfect multifunctional shoe which is dedicated to the lifestyle of a sophisticated wearer by its sporty style, its excellent fit, by the choice of high-tech materials and its modern colors on a young and trendy sole design.

For the design of the double layer outsole we took into account the most recent developments of work and sports medicine. The soft PU midsole ensures an even cushioning effect on the entire sole and the stabilization of the midfoot. The TPU outsole impresses technically

by its ideal slip and abrasion resistance and optically by its up-to-date design in various colors. Also for the upper we have chosen the most recent developments of materials. Hydrophobic leathers as well as a specific microfiber with breathable and at the same time water-repellent features are making these shoes especially suitable for wet areas. New innovative lining materials and the replaceable acc Wave insole ensure the best compensation of temperature and moisture for a perfect foot climate. Depending on your needs all styles of the uni6 range are available as occupational shoe according to EN ISO 20347:2012 or safety shoe with steel toe cap according to EN ISO 20345:2011 and in an ESD version.

Be ahead of the times with the new innovative “Uni6” series!

ABEBA®

uni6

**OCCUPATIONAL AND
SAFETY SHOES**



uni6

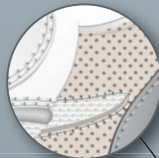




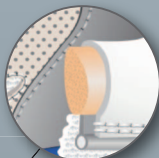
highly resistant leather/ A-micro (microfibre material)



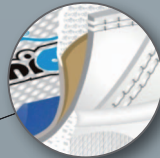
breathable textile inlays



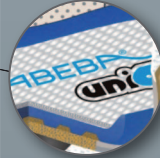
moisture absorbing lining



shape-keeping shank padding



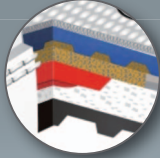
shape-keeping counter cap



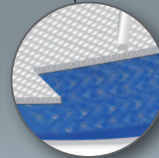
replaceable, shock absorbing acc Wave insole (air clima comfort)



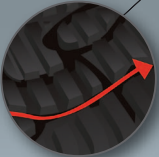
Abeba special profile with high slip resistance



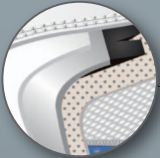
functional joint stabiliser



insole with ESD certified textile

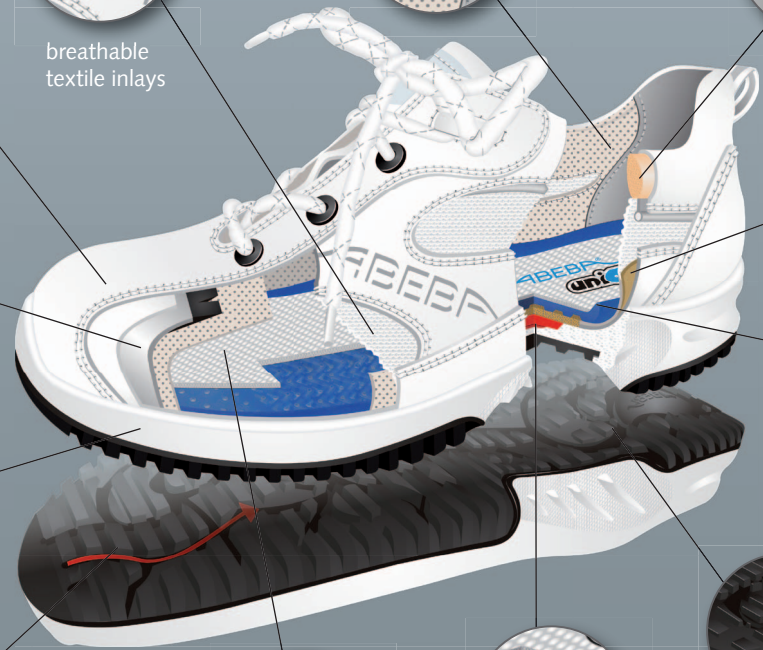


continous moisture drain



shock absorbing PU midsole

safety shoes according to EN ISO 20345:2011
occupational shoes according to EN ISO 20347:2012



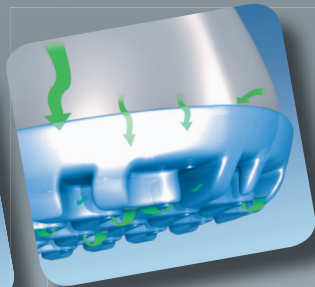
uni6

ABEBP®
uni6

NEW

Art. Nr. 3575 occupational shoes
Art. Nr. 3576 safety shoes
Size 35-48

acc Wave - air clima comfort



acc - ventilation

- ▶ Air circulates throughout the entire insole
- ▶ Immediate draining of perspiration
- ▶ Will dry over night
- ▶ Feet stay dryer and cooler

acc - bedding system

- ▶ Supports the forefoot
- ▶ High wearing comfort
- ▶ Supports natural movement
- ▶ Best fit thanks to individual adaption

acc - shock absorption system

- ▶ Instant absorption (reduces pressure peaks)
- ▶ Equal pressure distribution
- ▶ Shock absorption on the whole plantar area
- ▶ Relieves muscles, ligaments, joints and spine

replaceable &
available separately

UNI6 - Occupational and Safety shoes

A-micro

A-micro is a new and innovative high-tech material which is especially water-resistant and breathable it even surpasses hydrophobic leather. It is washable up to 30°C without shrinking and anti-bacterial, which is making it perfect for the use in hygienic sensitive areas. Additionally it can

be equipped with various treatments such as silver ions. Due to its special structure it is light and smooth but at the same time very tearproof and resistant. A-micro replicates leather visually **without** becoming yellow due to direct sunlight.

- ▶ CE
- ▶ SRC slip resistance according to EN ISO 20347:2012/ EN ISO 20345:2011
- ▶ Upper leather/ A-micro
- ▶ Sanitized® treated (odor and bacteria resistant)
- ▶ Antistatic/ ESD dissipative according to DIN EN 61340

- 1 Antistatic/ ESD dissipative according to DIN EN 61340
- 2 SRC slip resistance according to EN ISO 20347:2012/ EN ISO 20345:2011
- 3 Animal fats and oil resistant
- 4 Fuel resistance



uni6

OCCUPATIONAL AND
SAFETY SHOES



02 **(3)6782**

▶ CE, EN ISO 20347:2012 O2, FO, SRC

S2 **(3)1782**

▶ CE, EN ISO 20345:2011 S2, SRC



▶ Size 35-48

▶ A-micro grey/ blue



▶ Lining with Silver Point



▶ Replaceable acc Wave insole
(art. 3575/ 3576)



▶ HACCP-compliant



02 **(3)6783**

▶ CE, EN ISO 20347:2012 O2, FO, SRC

S2 **(3)1783**

▶ CE, EN ISO 20345:2011 S2, SRC



▶ Size 35-48

▶ A-micro grey/ red



▶ Lining with Silver Point



▶ Replaceable acc Wave insole
(art. 3575/ 3576)



▶ HACCP-compliant



(3) = Models in version

02 **(3)6784**

▶ CE, EN ISO 20347:2012 O2, FO, SRC

S2

(3)1784

▶ CE, EN ISO 20345:2011 S2, SRC

STEEL



▶ Size 35-48

▶ A-micro grey/ yellow



▶ Lining with Silver Point

▶ Replaceable acc Wave insole
(art. 3575/ 3576)



BGR 191



HACCP

▶ HACCP-compliant



BGR 191



02

(3)6785

▶ CE, EN ISO 20347:2012 O2, FO, SRC

S2

(3)1785

▶ CE, EN ISO 20345:2011 S2, SRC

STEEL



▶ Size 35-48

▶ A-micro grey/ black



▶ Lining with Silver Point

▶ Replaceable acc Wave insole
(art. 3575/ 3576)



BGR 191



HACCP

▶ HACCP-compliant



BGR 191

02 **(3)6780**

▶ CE, EN ISO 20347:2012 O2, FO, SRC

S2 **(3)1780**

▶ CE, EN ISO 20345:2011 S2, SRC

STEEL



▶ Size 35-48



▶ A-micro white



BGR 191



▶ Lining with Silver Point



BGR 191

HACCP

▶ Replaceable acc Wave insole
(art. 3575/ 3576)

▶ HACCP-compliant



02 **(3)6781**

▶ CE, EN ISO 20347:2012 O2, FO, SRC

S2 **(3)1781**

▶ CE, EN ISO 20345:2011 S2, SRC

STEEL



▶ Size 35-48



▶ A-micro black/ grey



BGR 191



▶ Lining with Silver Point



BGR 191

HACCP

▶ Replaceable acc Wave insole
(art. 3575/ 3576)

▶ HACCP-compliant



(3) = Models in  version

01 **(3)6720**

▶ CE, EN ISO 20347:2012 O1, FO, SRC

S1

(3)1720

▶ CE, EN ISO 20345:2011 S1, SRC

STEEL



▶ Size 35-48



▶ Smooth leather white with white breathable textile inlays



▶ Lining with Silver Point



▶ Replaceable acc Wave insole (art. 3575 / 3576)



▶ Reflective stripes



01 **(3)6721**

▶ CE, EN ISO 20347:2012 O1, FO, SRC

S1

(3)1721

▶ CE, EN ISO 20345:2011 S1, SRC

STEEL



▶ Size 35-48



▶ Velours black with black breathable textile inlays



▶ Lining with Silver Point



▶ Replaceable acc Wave insole (art. 3575 / 3576)



▶ Reflective stripes



01 **(3)6730**

▶ CE, EN ISO 20347:2012 O1, FO, SRC

S1

(3)1730

▶ CE, EN ISO 20345:2011 S1, SRC

STEEL



▶ Size 35-48



▶ Smooth leather white, micro-perforated



▶ Lining with Silver Point
▶ Replaceable acc Wave insole
(art. 3575/ 3576)

▶ Reflective stripes



01 **(3)6731**

▶ CE, EN ISO 20347:2012 O1, FO, SRC

S1

(3)1731

▶ CE, EN ISO 20345:2011 S1, SRC

STEEL



▶ Size 35-48



▶ Smooth leather black, micro-perforated



▶ Lining with Silver Point
▶ Replaceable acc Wave insole
(art. 3575/ 3576)

▶ Reflective stripes



(3) = Models in version

02 **(3)6770**

▶ CE, EN ISO 20347:2012 O2, FO, SRC

S2

(3)1770

▶ CE, EN ISO 20345:2011 S2, SRC

STEEL



▶ Size 35-48



▶ Smooth leather white



▶ Lining with Silver Point



▶ Replaceable acc Wave insole
(art. 3575/ 3576)



▶ Reflective stripes



02 **(3)6771**

▶ CE, EN ISO 20347:2012 O2, FO, SRC

S2

(3)1771

▶ CE, EN ISO 20345:2011 S2, SRC

STEEL



▶ Size 35-48



▶ Smooth leather black



▶ Lining with Silver Point



▶ Replaceable acc Wave insole
(art. 3575/ 3576)

▶ Reflective stripes



01 **(3)6761**

▶ CE, EN ISO 20347:2012 O1, FO, SRC

S1 **(3)1761**

▶ CE, EN ISO 20345:2011 S1, SRC

STEEL

- ▶ Size 35-48
- ▶ Functional leather black with honeycomb pattern
- ▶ Lining with Silver Point
- ▶ Replaceable acc Wave insole (art. 3575/ 3576)
- ▶ Water-repellent
- ▶ Scratch-proof



01 **(3)6760**

▶ CE, EN ISO 20347:2012 O1, FO, SRC

S1 **(3)1760**

▶ CE, EN ISO 20345:2011 S1, SRC

STEEL

- ▶ Size 35-48
- ▶ Functional leather white with honeycomb pattern
- ▶ Lining with Silver Point
- ▶ Replaceable acc Wave insole (art. 3575/ 3576)
- ▶ Water-repellent
- ▶ Scratch-proof



(3) = Models in  version

01 **(3)6762**

▶ CE, EN ISO 20347:2012 O1, FO, SRC

S1

(3)1762

▶ CE, EN ISO 20345:2011 S1, SRC

STEEL



▶ Size 35-48



▶ Functional leather blue with honeycomb pattern

▶ Lining with Silver Point



▶ Replaceable acc Wave insole
(art. 3575/ 3576)

▶ Water-repellent

▶ Scratch-proof



01 **(3)6763**

▶ CE, EN ISO 20347:2012 O1, FO, SRC

S1

(3)1763

▶ CE, EN ISO 20345:2011 S1, SRC

STEEL



▶ Size 35-48



▶ Functional leather navy blue

▶ Lining with Silver Point



▶ Replaceable acc Wave insole
(art. 3575/ 3576)

▶ Water-repellent

▶ Scratch-proof



01 (3)6764

▶ CE, EN ISO 20347:2012 O1, FO, SRC

S1 (3)1764

▶ CE, EN ISO 20345:2011 S1, SRC



▶ Size 35-48



▶ Functional leather red with honeycomb pattern

▶ Lining with Silver Point



▶ Replaceable acc Wave insole (art. 3575/ 3576)

▶ Water-repellent

▶ Scratch-proof



functional leather with honeycomb pattern



water-repellent and scratch-proof



The steel toe-cap icon



Safety shoes with steel toe-cap

- ▶ Certified according to DIN EN 12568
- ▶ Tested outside shoe (200 joules)
- ▶ Certified according to EN ISO 20345:2011
- ▶ Tested inside shoe (200 joules)



01 **(3)6700**

▶ CE, EN ISO 20347:2012 O1, FO, SRC

S1

(3)1700

▶ CE, EN ISO 20345:2011 S1, SRC

STEEL



▶ Size 35-48



▶ Smooth leather white with white breathable textile inlays



▶ Lining "on steam®"



▶ Replaceable acc Wave insole
(art. 3575/ 3576)



▶ Reflective stripes



01 **(3)6701**

▶ CE, EN ISO 20347:2012 O1, FO, SRC

S1

(3)1701

▶ CE, EN ISO 20345:2011 S1, SRC

STEEL



▶ Size 35-48



▶ Velours black with black breathable textile inlays



▶ Lining "on steam®"



▶ Replaceable acc Wave insole
(art. 3575/ 3576)

▶ Reflective stripes



01 (3)6711

▶ CE, EN ISO 20347:2012 O1, FO, SRC

S1 (3)1711

▶ CE, EN ISO 20345:2011 S1, SRC



▶ Size 35-48

▶ Velours black



▶ Lining "on steam®"



▶ Replaceable acc Wave insole
(art. 3575/ 3576)



02 (3)6750

▶ CE, EN ISO 20347:2012 O2, FO, SRC

S2 (3)1750

▶ CE, EN ISO 20345:2011 S2, SRC



▶ Size 35-48

▶ Smooth leather white



▶ Lining "on steam®"



▶ Replaceable acc Wave insole
(art. 3575/ 3576)



02 **(3)6751**

▶ CE, EN ISO 20347:2012 O2, FO, SRC

S2

(3)1751

▶ CE, EN ISO 20345:2011 S2, SRC

STEEL



▶ Size 35-48



▶ Smooth leather black



▶ Lining "on steam®"



▶ Replaceable acc Wave insole
(art. 3575/ 3576)



02 **(3)6752**

▶ CE, EN ISO 20347:2012 O2, FO, SRC

S2

(3)1752

▶ CE, EN ISO 20345:2011 S2, SRC

STEEL



▶ Size 35-48



▶ Smooth leather black/ brown



▶ Lining "on steam®"



▶ Replaceable acc Wave insole
(art. 3575/ 3576)



▶ Reflective stripes



S2 **31753**

▶ CE, EN ISO 20345:2011 S2, SRC

STEEL

▶ Size 35-48

WAVE

▶ Smooth leather black in ATEX design

WAVE

▶ Lining "on steam®"
▶ Replaceable acc Wave insole
(art. 3576)

BGR 191

BGR 191

ATEX®



ATEX = ATmosphère EXplosible (explosive atmosphere)

The styles of our ATEX range are the first shoes within Europe certified for the use in EX-areas. We would certainly provide you with the corresponding TÜV certificates if needed.

- The following norms and directives have been taken into account:
- ▶ EC Directive 99/92/EC
 - ▶ EN 61340-4-3:2001 (climate class 1)

ATEX®

according to EN 61340-4-3,
climate class 1, $23 \pm 2^\circ\text{C}$, $12\% \pm 3\% \text{ RH}$

INFO ICONS



STEEL TOE-CAP



SUITABLE FOR KITCHENS



REPLACEABLE INSOLE



ESD



WASCHABLE AT 30° C



HACCP-COMPLIANT



IDENTIFICATION



BREATHABLE



ORTHOSTAT (INSOLE)



SENSOSTAT (INSOLE)

INFO TECHNICAL

ON STEAM®

On steam® is a new breathable high-tech microfiber lining with an absorption capacity of 8 times its weight in water. It offers a maximum comfort and a complete dryness for a perfect foot climate.

Technical characteristics:

- ▶ Absorbs moisture and desorbs it to the outside
- ▶ Breathable - antimicrobial - odor avoiding
- ▶ Temperature regulating
- ▶ Anti-allergy
- ▶ CO₂ neutral production
- ▶ Control of harmful substances according to Öko-Tex Standard 100

SILVER-POINT

With SILVER-POINT lining you made the right decision:

- ▶ Absorbing humidity
- ▶ Built-in protection by silver ions
- ▶ Antibacterial effect according to DIN EN ISO 20645
- ▶ Odor-inhibiting by germ reduction



INFO TECHNIK

Requirements (Extract from the standards)

BASIC REQUIREMENTS*

toe protection (200 joules)

anti-slip property (SRA, SRB or SRC)

ADDITIONAL REQUIREMENTS*

penetration resistance

antistatic property

energy absorption of heel area

heat insulation of the outsole

cold insulation of the outsole

UPPER

water penetration and water absorption

OUTSOLE

reaction on contact heat

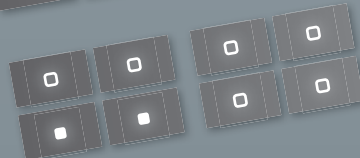
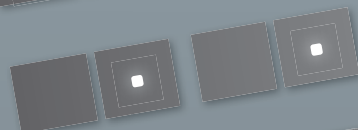
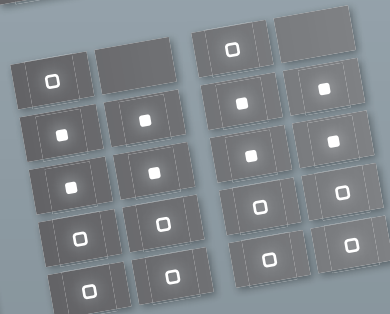
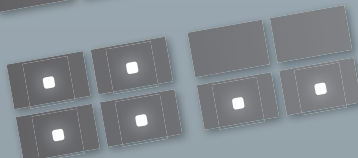
fuel resistance

S1

S2

O1

O2



Fulfills requirement



Requirement may be fulfilled, but is optional

*finished shoe

TRACING FILE

Art.-No.	Page	Size	Category	Standard and Marking
3575	6	35-48	Insole	Occupational Shoes
(3)6700	18	35-48	Occupational Shoes	CE, EN ISO 20347:2012 - O1, FO, SRC
(3)6701	18	35-48	Occupational Shoes	CE, EN ISO 20347:2012 - O1, FO, SRC
(3)6711	19	35-48	Occupational Shoes	CE, EN ISO 20347:2012 - O1, FO, SRC
(3)6720	12	35-48	Occupational Shoes	CE, EN ISO 20347:2012 - O1, FO, SRC
(3)6721	12	35-48	Occupational Shoes	CE, EN ISO 20347:2012 - O1, FO, SRC
(3)6730	13	35-48	Occupational Shoes	CE, EN ISO 20347:2012 - O1, FO, SRC
(3)6731	13	35-48	Occupational Shoes	CE, EN ISO 20347:2012 - O1, FO, SRC
(3)6750	19	35-48	Occupational Shoes	CE, EN ISO 20347:2012 - O1, FO, SRC
(3)6751	20	35-48	Occupational Shoes	CE, EN ISO 20347:2012 - O2, FO, SRC
(3)6752	20	35-48	Occupational Shoes	CE, EN ISO 20347:2012 - O2, FO, SRC
(3)6760	15	35-48	Occupational Shoes	CE, EN ISO 20347:2012 - O1, FO, SRC
(3)6761	15	35-48	Occupational Shoes	CE, EN ISO 20347:2012 - O1, FO, SRC
(3)6762	16	35-48	Occupational Shoes	CE, EN ISO 20347:2012 - O1, FO, SRC
(3)6763	16	35-48	Occupational Shoes	CE, EN ISO 20347:2012 - O1, FO, SRC
(3)6764	17	35-48	Occupational Shoes	CE, EN ISO 20347:2012 - O1, FO, SRC
(3)6770	14	35-48	Occupational Shoes	CE, EN ISO 20347:2012 - O2, FO, SRC
(3)6771	14	35-48	Occupational Shoes	CE, EN ISO 20347:2012 - O2, FO, SRC
(3)6780	11	35-48	Occupational Shoes	CE, EN ISO 20347:2012 - O2, FO, SRC
(3)6781	11	35-48	Occupational Shoes	CE, EN ISO 20347:2012 - O2, FO, SRC
(3)6782	9	35-48	Occupational Shoes	CE, EN ISO 20347:2012 - O2, FO, SRC
(3)6783	9	35-48	Occupational Shoes	CE, EN ISO 20347:2012 - O2, FO, SRC
(3)6784	10	35-48	Occupational Shoes	CE, EN ISO 20347:2012 - O2, FO, SRC
(3)6785	10	35-48	Occupational Shoes	CE, EN ISO 20347:2012 - O2, FO, SRC

TRACING FILE

Art.-No.	Page	Size	Category	Standard and Marking
3576	6	35-48	Insole	Safety Shoes
(3)1700	18	35-48	Safety Shoes	CE, EN ISO 20345:2011 - S1, SRC
(3)1701	18	35-48	Safety Shoes	CE, EN ISO 20345:2011 - S1, SRC
(3)1711	19	35-48	Safety Shoes	CE, EN ISO 20345:2011 - S1, SRC
(3)1720	12	35-48	Safety Shoes	CE, EN ISO 20345:2011 - S1, SRC
(3)1721	12	35-48	Safety Shoes	CE, EN ISO 20345:2011 - S1, SRC
(3)1730	13	35-48	Safety Shoes	CE, EN ISO 20345:2011 - S1, SRC
(3)1731	13	35-48	Safety Shoes	CE, EN ISO 20345:2011 - S1, SRC
(3)1750	19	35-48	Safety Shoes	CE, EN ISO 20345:2011 - S2, SRC
(3)1751	20	35-48	Safety Shoes	CE, EN ISO 20345:2011 - S2, SRC
(3)1752	20	35-48	Safety Shoes	CE, EN ISO 20345:2011 - S2, SRC
31753	21	35-48	Safety Shoes	CE, EN ISO 20345:2011 - S1, SRC
(3)1760	15	35-48	Safety Shoes	CE, EN ISO 20345:2011 - S1, SRC
(3)1761	15	35-48	Safety Shoes	CE, EN ISO 20345:2011 - S1, SRC
(3)1762	16	35-48	Safety Shoes	CE, EN ISO 20345:2011 - S1, SRC
(3)1763	16	35-48	Safety Shoes	CE, EN ISO 20345:2011 - S2, SRC
(3)1764	17	35-48	Safety Shoes	CE, EN ISO 20345:2011 - S2, SRC
(3)1770	14	35-48	Safety Shoes	CE, EN ISO 20345:2011 - S2, SRC
(3)1771	14	35-48	Safety Shoes	CE, EN ISO 20345:2011 - S2, SRC
(3)1780	11	35-48	Safety Shoes	CE, EN ISO 20345:2011 - S2, SRC
(3)1781	11	35-48	Safety Shoes	CE, EN ISO 20345:2011 - S2, SRC
(3)1782	9	35-48	Safety Shoes	CE, EN ISO 20345:2011 - S2, SRC
(3)1783	9	35-48	Safety Shoes	CE, EN ISO 20345:2011 - S2, SRC
(3)1784	10	35-48	Safety Shoes	CE, EN ISO 20345:2011 - S2, SRC
(3)1785	10	35-48	Safety Shoes	CE, EN ISO 20345:2011 - S2, SRC

We reserve the right to modify models, colours and technical details as well as the right to make a compensation or subsequent delivery.



ABEBA Spezialschuhausstatter GmbH

Schlackenbergrasse 5 . D-66386 St. Ingbert

Phone: +49 6894 3103-100 . Fax: +49 6894 3074

E-Mail: abeba@abeba.de . www.abeba.com



ABEBA®

Spezialschuhausstatter GmbH
Schlackenbergstrasse 5
D-66386 St. Ingbert
Phone: +49 6894 3103-100
Fax: +49 6894 3074
E-Mail: abeba@abeba.de
www.abeba.com